

## 2020 Land Budget Overview Expenditure Review

### Platte River Recovery Implementation Program

For More Information Contact: Jason Farnsworth, [farnsworthj@headwaterscorp.com](mailto:farnsworthj@headwaterscorp.com) (308) 237-5728

### *2020 Land Budget Overview By Budget Line Item*

Budget Line Item	Description	Estimated Expenditure	Actual Expenditure
LP-2	Adaptive Management Species Habitat Actions	\$610,948	\$262,458
LP-3	New Land Acquisitions	\$3,000,000	\$1,273,692
LP-4	Property Maintenance & Agricultural Operations	\$193,900	\$88,058
LP-6	Land Plan Special Advisors	\$20,000	\$10,300
LP-7	Public Access Management	\$80,000	\$120,000
WPLW-1	Property Maintenance for Water Properties	\$88,000	\$10,352

## 2020 Budget Overview By Complex

Complex	Estimated Expenditure	Actual Expenditure	Estimated Income	Actual Income
Non-Complex Tracts	\$55,559	\$48,949	\$48,100	\$74,159
Plum Creek "Complex"	\$37,550	\$20,182	\$12,350	\$12,880
Cottonwood Ranch Complex	\$64,683	\$40,751	\$14,135	\$6,949
Elm Creek Complex	\$47,331	\$25,344	\$17,950	\$15,950
Jerry F. Kenny Pawnee Complex	\$36,300	\$32,894	\$585	\$585
Fort Kearny Complex	\$62,840	\$36,368	\$45,200	\$31,683
Minden-Gibbon Complex	\$28,695	\$39,528	\$0	\$0
Clark Island Complex	\$108,519	\$86,398	\$36,360	\$37,400
Shoemaker Island Complex	\$38,241	\$20,102	\$42,595	\$51,857
Chapman Complex	\$225,130	\$0	\$3,000	\$3,640
Water Properties	\$73,000	\$10,352	\$9,000	\$10,951
New Acquisitions (Estimated 4)*	\$115,000		\$0	\$0
<b>Total</b>	<b>\$892,848</b>	<b>\$360,868</b>	<b>\$229,275</b>	<b>\$246,054</b>

\* \$50K for maintenance, \$50K for species habitat & \$15K for water land maintenance

## 2020 Budget Priority Areas by Budget Line Item

**LP-2 – Adaptive Management Species Habitat Actions:** Species habitat priorities for 2020 were focused on creation and maintenance of suitable complex and non-complex habitat for Program target species.

**LP-3 – New Land Acquisitions:** 2020 land acquisition priorities included identification and acquisition of land for construction of an additional 60 acres of off-channel sand and water habitat for least tern and piping plover nesting habitat and identification and acquisition of land that count towards the First Increment Extension habitat land "plus up" of 1,500 acres.

**LP-4 – Property Maintenance & Agricultural Operations:** 2020 priorities included maintenance of basic land infrastructure such as facilities, roads, and fences as well as fulfilling basic ownership obligations like noxious weed control and ROW mowing.

**LP-6 – Land Plan Special Advisors:** Priorities for special advisors included administration of agricultural leases and associated FSA obligations, crop management and marketing, and assistance in cropland conversions.

**LP-7 – Public Access Management:** Nebraska Game and Parks Commission managed public access to Program lands in 2020.

**WPLW-1 – Property Maintenance for Water Properties:** 2020 priorities included maintenance of basic land infrastructure such as facilities, roads, and fences as well as fulfilling basic ownership obligations like noxious weed control and ROW mowing.

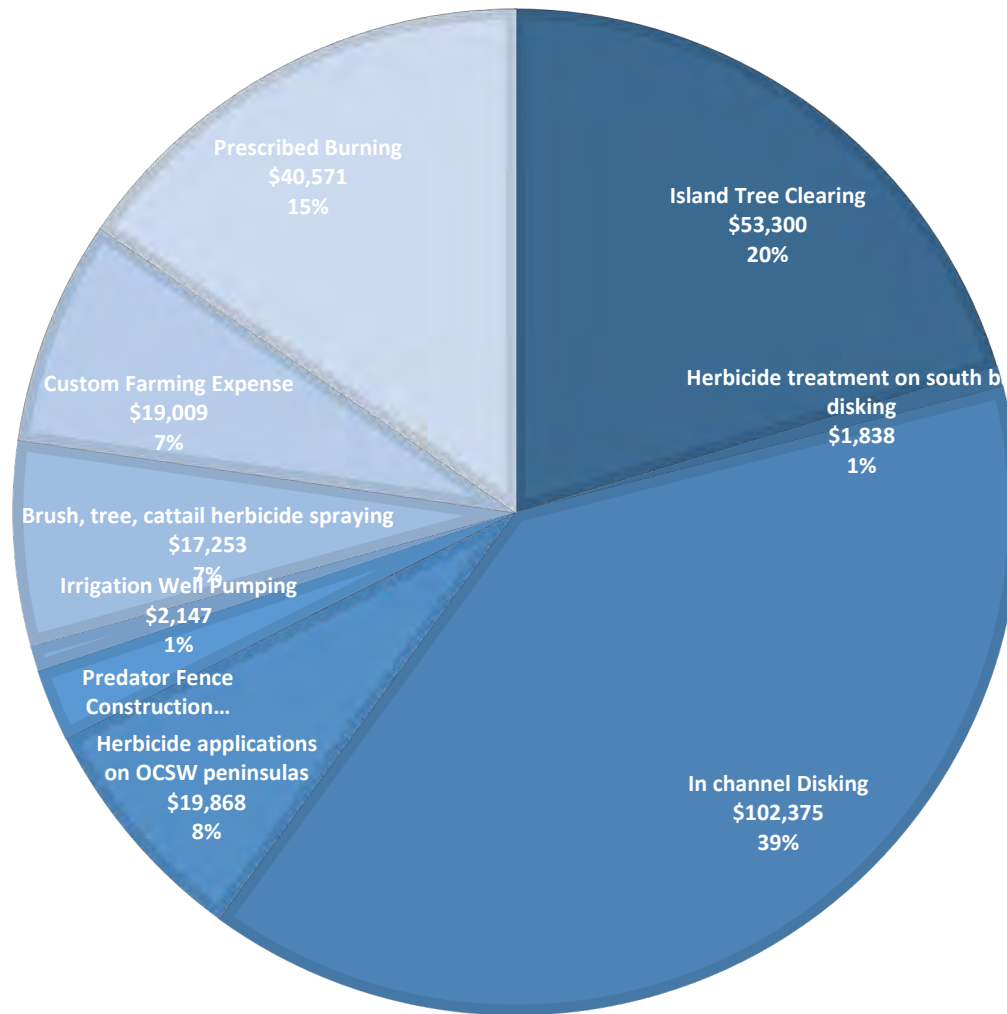
Priority Area: <i>Species Habitat</i>		2020 Budget		2020 Expenditures	
LP-2		Total	%	Total	%
Item(s): <i>Improve Target Species Sand and Water Habitat</i>	Island Tree Clearing	\$210,000	34%	\$53,300	20%
	Herbicide treatment on south bank to kill vegetation prior to disking	\$2,000	0.33%	\$1,838	0.70%
	Disking if necessary to provide in-channel vegetation control	\$192,390	31%	\$102,375	39%
	<b>Subtotal</b>	<b>\$404,390</b>	<b>66%</b>	<b>\$157,513</b>	<b>60%</b>
Item(s): Maintain Suitable In- and Off-Channel Sand & Water Habitat	Herbicide applications on OCSW peninsulas to maintain bare sand nesting habitat	\$19,400	3%	\$19,868	8%
	Construct 10 acres of on-channel LT/PP MCA habitat	\$15,330	3%	\$0	0%
	Predator Fence Construction	\$10,200	2%	\$6,097	2%
	<b>Subtotal</b>	<b>\$44,930</b>	<b>7%</b>	<b>\$25,965</b>	<b>10%</b>
Item(s): <i>Maintain Suitable Palustrine Wetland Habitat</i>	Irrigation Well Pumping	\$8,400	1.37%	\$2,147	0.82%
	Brush, tree, cattail herbicide spraying	\$11,700	2%	\$17,253	7%
	Custom Farming Expense	\$16,500	3%	\$19,009	7%
	<b>Subtotal</b>	<b>\$36,600</b>	<b>6%</b>	<b>\$38,409</b>	<b>15%</b>
Item(s): Whooping Crane Grassland / Wet Meadow Habitat	Prescribed Burning	\$60,028	10%	\$40,571	15%
	Russian olive & Tree Pile Removal	\$15,000	2%	\$0	0%
	<b>Subtotal</b>	<b>\$75,028</b>	<b>12%</b>	<b>\$40,571</b>	<b>15%</b>
<b>Existing Land Subtotal</b>		<b>\$560,948</b>	<b>92%</b>	<b>\$262,458</b>	<b>100%</b>
2020 New Acquisitions		\$50,000	8%	\$0	0%
<b>LP-2 Budget Total</b>		<b>\$610,948</b>	<b>100%</b>	<b>\$262,458</b>	<b>100%</b>

Priority Area: Land Acquisitions		2020 Budget		2020 Expenditures	
LP-3		Total	%	Total	%
Item(s): <i>Land Acquisition, Property Taxes and Associated Fees</i>	Land interest holding entity (LIHE)	\$62,000	2%	\$61,805	5%
	Property Taxes	\$138,400	5%	\$150,092	12%
	Cottonwood Ranch Sponsorship Agreement	\$15,000	1%	\$48,999	4%
	Land Acquisition Associated Costs	\$75,000	3%	\$15,997	1%
	Buy, Lease or Easement (400 acres)	\$2,700,000	90%	\$996,798	78%
	<b>LP-3 Budget Total</b>	<b>\$2,990,400</b>	<b>100%</b>	<b>\$1,273,691</b>	<b>100%</b>

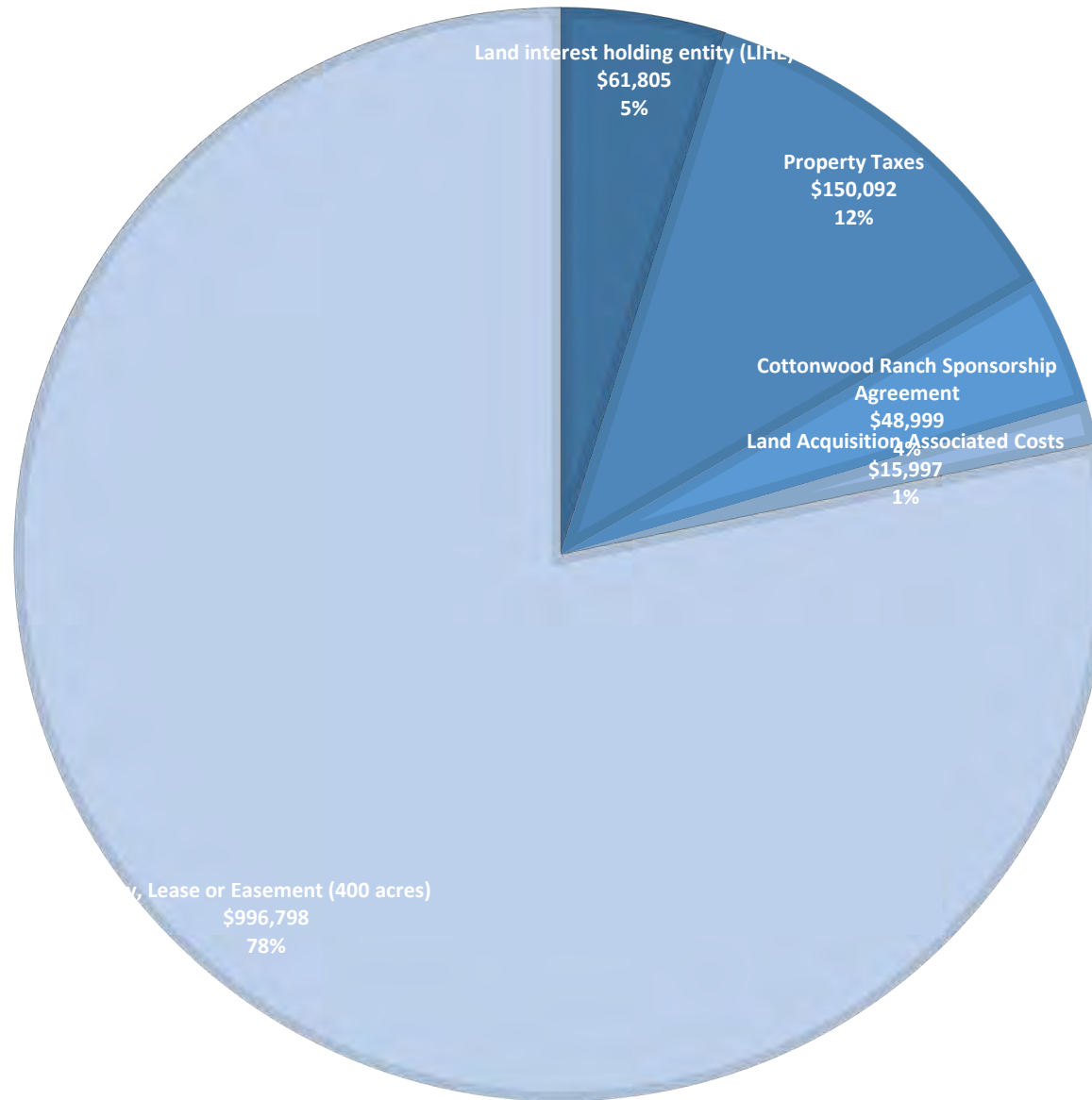
Priority Area: Operations and Maintenance		2020 Budget		2020 Expenditures	
LP-4		Total	%	Total	%
Item(s): <i>Basic Property Maintenance Obligations and Needs</i>	Fence & Road Maintenance	\$37,000	19%	\$18,737	21%
	Noxious Weed Control	\$69,800	36%	\$36,101	41%
	Mowing	\$11,300	6%	\$7,470	8%
	Lodge & Quonset Utilites & maintenance	\$5,600	3%	\$5,705	6%
	Cabin Utilites & maintenance	\$2,500	1%	\$3,020	3%
	Fence Replacement	\$13,200	7%	\$13,586	15%
	Electricity for Livestock wells	\$4,500	2%	\$3,439	4%
	<b>Existing Land Subtotal</b>	<b>\$143,900</b>	<b>74%</b>	<b>\$88,058</b>	<b>100%</b>
	2020 New Acquisitions	\$50,000	26%	\$0	0%
	<b>LP-4 Budget Total</b>	<b>\$193,900</b>	<b>100%</b>	<b>\$88,058</b>	<b>100%</b>

Priority Area: Water Tract Operations and Maintenance		2020 Budget		2020 Expenditures	
WPLW-1		Total	%	Total	%
Item(s): <i>Basic Property Maintenance Obligations and Needs</i>					
	Fence & Road Maintenance	\$7,000	8%	\$0	0%
	Fence Replacement	\$16,500	19%	\$0	0%
	Noxious Weed Control	\$15,000	17%	\$0	0%
	Mowing	\$2,000	2%	\$0	0%
	Custom Farm Expense	\$23,000	26%	\$0	0%
	Electricity for Livestock wells	\$500	1%	\$519	5%
	Property Taxes	\$9,000	12%	\$9,833	95%
	Existing Land Subtotal	<b>\$73,000</b>	<b>83%</b>	<b>\$10,352</b>	<b>100%</b>
	2020 New Acquisitions	\$15,000	17%	\$0	0%
WPLW-1 Budget Total		\$88,000	100%	\$10,352	100%

## 2020 LP-2 EXPENDITURES

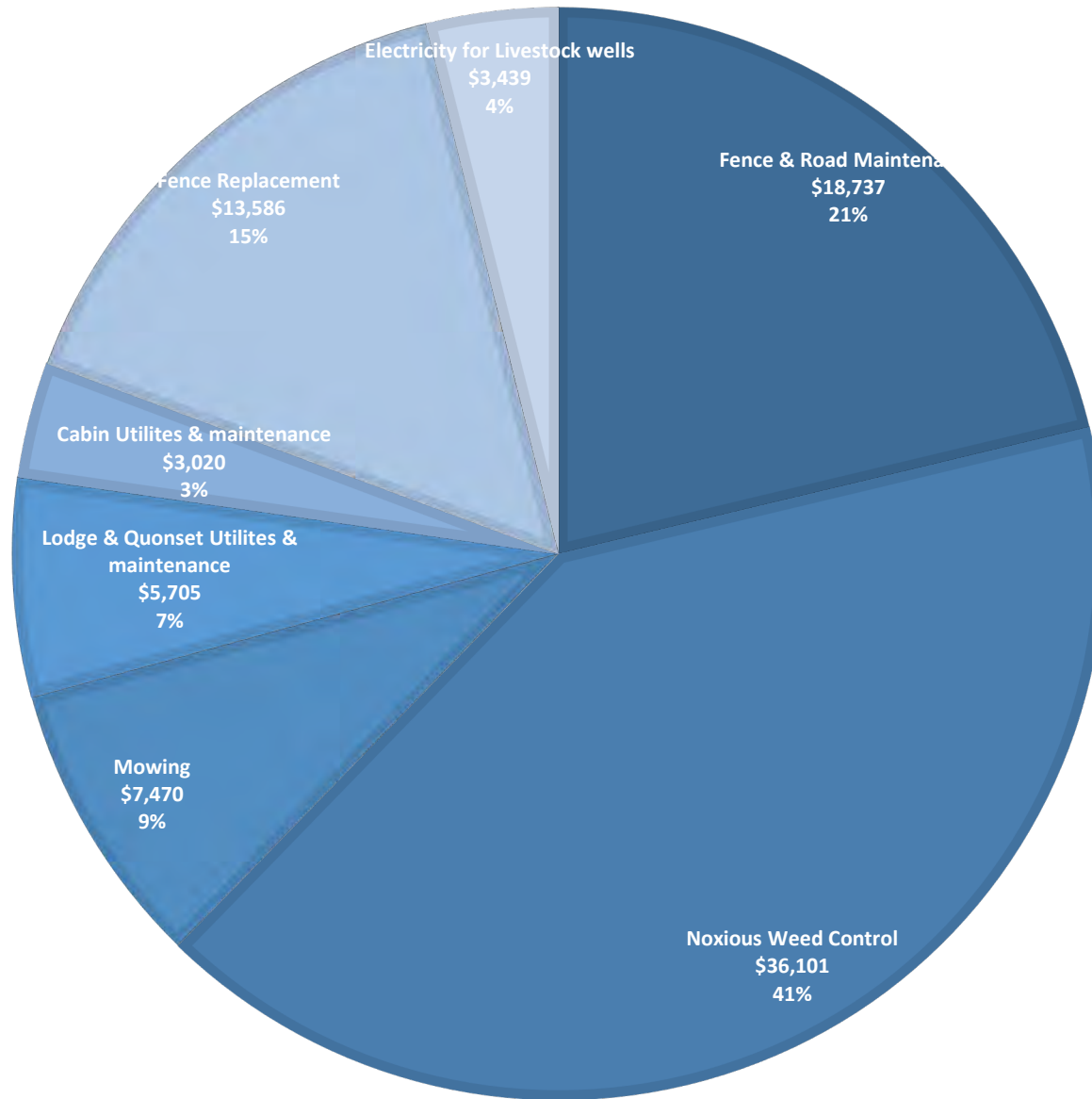


## 2020 LP-3 EXPENDITURES

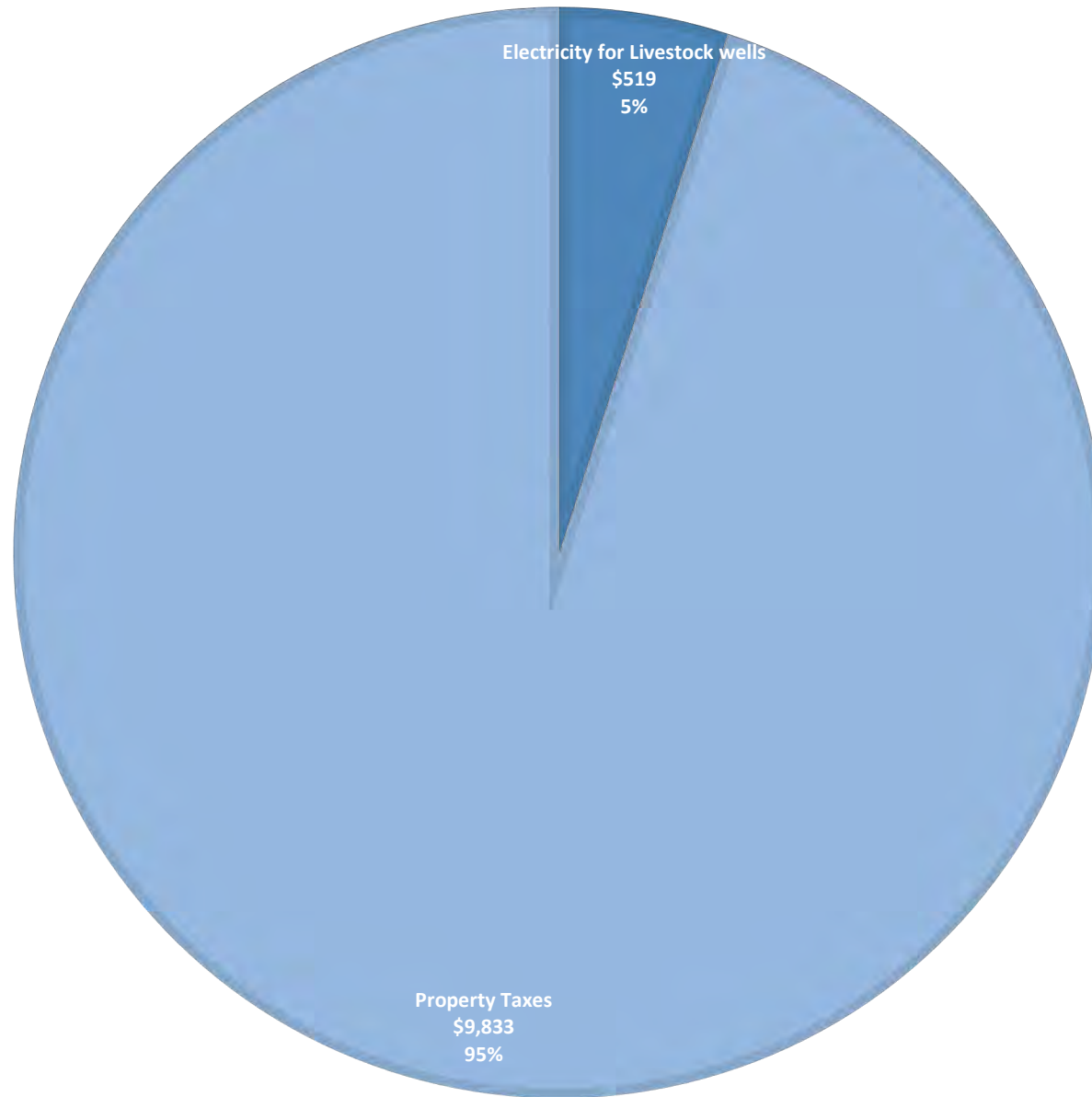




## 2020 LP-4 EXPENDITURES



## 2020 WPLW-1 EXPENDITURES



# 2020 Non-Complex Properties Annual Work Plan Report

## Platte River Recovery Implementation Program

For More Information Contact: Jason Farnsworth, farnsworthj@headwaterscorp.com (308) 237-5728

### General Priorities

- \* **Good Neighbor Policy** - Conducted all actions in accordance with Program's good neighbor policy.

### Adaptive Management Priorities

- \* **Species Monitoring** – Monitored whooping crane use of non-complex palustrine wetlands and least tern and piping plover use and productivity at off-channel sand and water nesting sites.

### Species Habitat Priorities

- \* **Maintain Suitable Off-Channel Sand and Water Nesting Habitat** – Applied pre-emergent herbicide on Tracts 2009008, 2010002, 2011001, and 2011002 OCSW nesting habitat to prevent vegetation encroachment into nesting areas.
- \* **Maintain Suitable Palustrine Wetland Roosting Habitat** – Managed vegetation height in the palustrine wetland areas of Tracts 2012004 and 2013001 to maintained suitable unobstructed view widths for whooping crane roosting.
- \* **Protecting Other Species of Concern** – Identified presence of and determine methods to protect other species of concern during implementation of land-related activities.

### Operations and Maintenance Priorities

- \* **Basic Property Maintenance Obligations and Needs** – Fulfilled basic property ownership obligations and needs including boundary fence signage, road maintenance, and noxious weed control.
- \* **Agricultural Operations** – Oversight of crop leases on Tracts 2009008, 2012004 and 2013001 and hay lease on Tract 2011001.
- \* **Sand and Gravel Mining Operations** – Monitored sand and gravel mining operations on Tracts 2009008 and 2011002.

*NOTE: The budget section of this work plan only contains information for work items that are specific to these tracts. As such, tract-specific research and monitoring actions are presented but system-scale actions like target species and geomorphology/vegetation monitoring are not.*

**Priority Area: *General*****Item(s):** *Land Interest and Tract-Level Restoration and Maintenance Planning*

No.	Management Activities	Budget Line Item	Completed	Cost (Estimated)	Actual Cost
NC 1	Coordination of Program land actions with neighboring landowners	N/A	Yes	N/A	N/A

**Priority Area: *Species Habitat*****Item(s):** *Maintain Suitable In- and Off-Channel Sand & Water Habitat*

No.	Management Activities	Budget Line Item	Completed	Cost (Estimated)	Actual Cost
NC 2	Herbicide applications on OCSW peninsulas to maintain bare sand nesting habitat	LP-2	Yes	\$12,000	\$10,816
NC 3	Tract 2009008 Predator Fence (~380 LF)	LP-2	No	\$5,700	\$0
NC 4	Tract 2010002 Predator Fence (~300 LF)	LP-2	Yes	\$4,500	\$6,097

**Priority Area: *Species Habitat*****Item(s):** *Maintain Suitable Palustrine Wetland Habitat*

No.	Management Activities	Budget Line Item	Completed	Cost (Estimated)	Actual Cost
NC 5	Irrigation well pumping to augment water level in wetland area of Tract 2013001	LP-2	Yes	\$3,000	\$1,343
NC 6	Tract 2012004 Prescribed burn (70 ac)	LP-2	No	\$3,010	\$0
NC 7	Tract 2013001 Prescribed burn (43 ac)	LP-2	Yes	\$1,849	\$2,867
NC 8	Brush, tree, cattail herbicide spraying	LP-2	Yes	\$3,300	\$1,725
NC 9	Tract 2013001 Custom Farming Expenses	LP-2	Yes	\$16,500	\$19,009

**Priority Area: *Species Habitat*****Item(s):** *Other Species of Concern*

No.	Management Activities	Budget Line Item	Completed	Cost (Estimated)	Actual Cost
NC 10	Habitat and species surveys on properties where work will occur	N/A	Yes	N/A	N/A
NC 11	Coordination with USFWS and NGPC to identify and mitigate potential impacts associated with land activities	N/A	Yes	N/A	N/A

## Priority Area: Operations and Maintenance

**Item(s):** *Basic Property Maintenance Obligations and Needs*

No.	Management Activities	Budget Line Item	Completed	Cost (Estimated)	Actual Cost
NC 12	Fence and road maintenance	LP-4	Yes	\$1,500	\$4,609
NC 13	Noxious weed control	LP-4	Yes	\$2,000	\$1,167
NC 14	Mowing	LP-4	No	\$1,000	\$0
NC 15	Tract 2012004 Electricity	LP-4	Yes	\$1,200	\$1,316

## Priority Area: Operations and Maintenance

**Item(s):** *Agricultural Operations*

No.	Management Activities	Budget Line Item	Completed	Cost (Estimated)	Actual Cost
NC 16	Oversight of grazing and cropland	N/A	Yes	N/A	N/A
NC 17	Oversight of sand and gravel mining	N/A	Yes	N/A	N/A

### Property Identification Key:

2009008 - PRRIP Broadfoot Newark Tract  
2010002 - Broadfoot Kearney South Tract  
2011001 - PRRIP East Leaman Tract  
2011002 - PRRIP Follmer Alda Tract  
2012004 - PRRIP DeBore Tract  
2013001 - PRRIP Liehs Tract

## 2020 Non-Complex Tracts Budget Summary

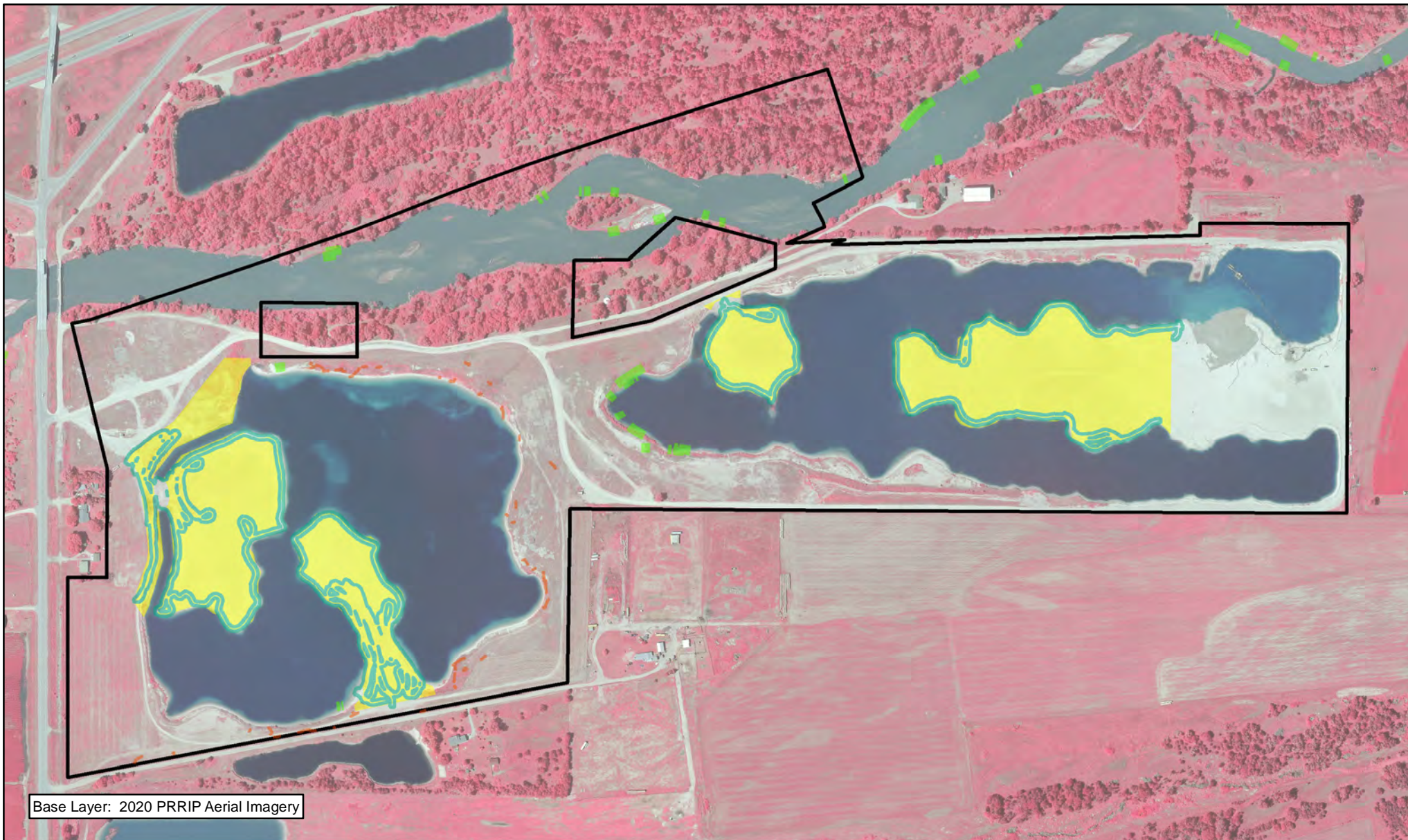
### 2020 Expenditures by Program Budget Line Item

Priority Area	Item	Budget Line Item	Estimated Expenditure	2020 Expenditure
Species Habitat	Create & Maintain Off-Channel Sand & Water Habitat	LP-2	\$22,200	\$16,913
Species Habitat	Create & Maintain Palustrine Wetland Habitat	LP-2	\$27,659	\$24,944
		<b>Subtotal</b>	<b>\$49,859</b>	<b>\$41,857</b>
Operations and Maintenance	Property Maintenance and Agricultural Operations	LP-4	\$5,700	\$7,092
		<b>Total</b>	<b>\$55,559</b>	<b>\$48,949</b>

### 2020 Revenues

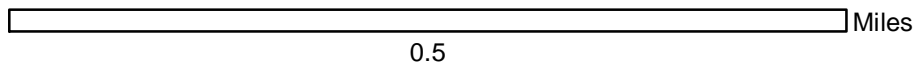
Tract	Item	Estimated Income	2020 Income
Tract 2009008	Sand & Gravel Royalties	\$7,700	\$28,563
Tract 2009008	Hay Income	\$400	\$750
Tract 2011001	Hay Income	\$500	\$496
Tract 2011002	Sand & Gravel Royalties	\$5,000	\$9,336
Tract 2011002	Cropland Cash Rent Income	\$3,060	\$3,060
Tract 2012004	Cropland Cash Rent Income	\$3,000	\$3,000
Tract 2012004	Grazing Income	\$2,000	\$1,650
Tract 2013001	Cropland Cash Rent Income	\$6,600	\$6,600
Tract 2013001	Cropland Custom Farm Income	\$19,840	\$20,169
Tract 2013001	FSA payment for 2019 PLCP Program	\$0	\$535
<b>Total</b>		<b>\$48,100</b>	<b>\$74,159</b>





### Legend

- PVWMA Phrag Control
- Road Maintenance
- Brush Control
- Herbicide
- Preemergent

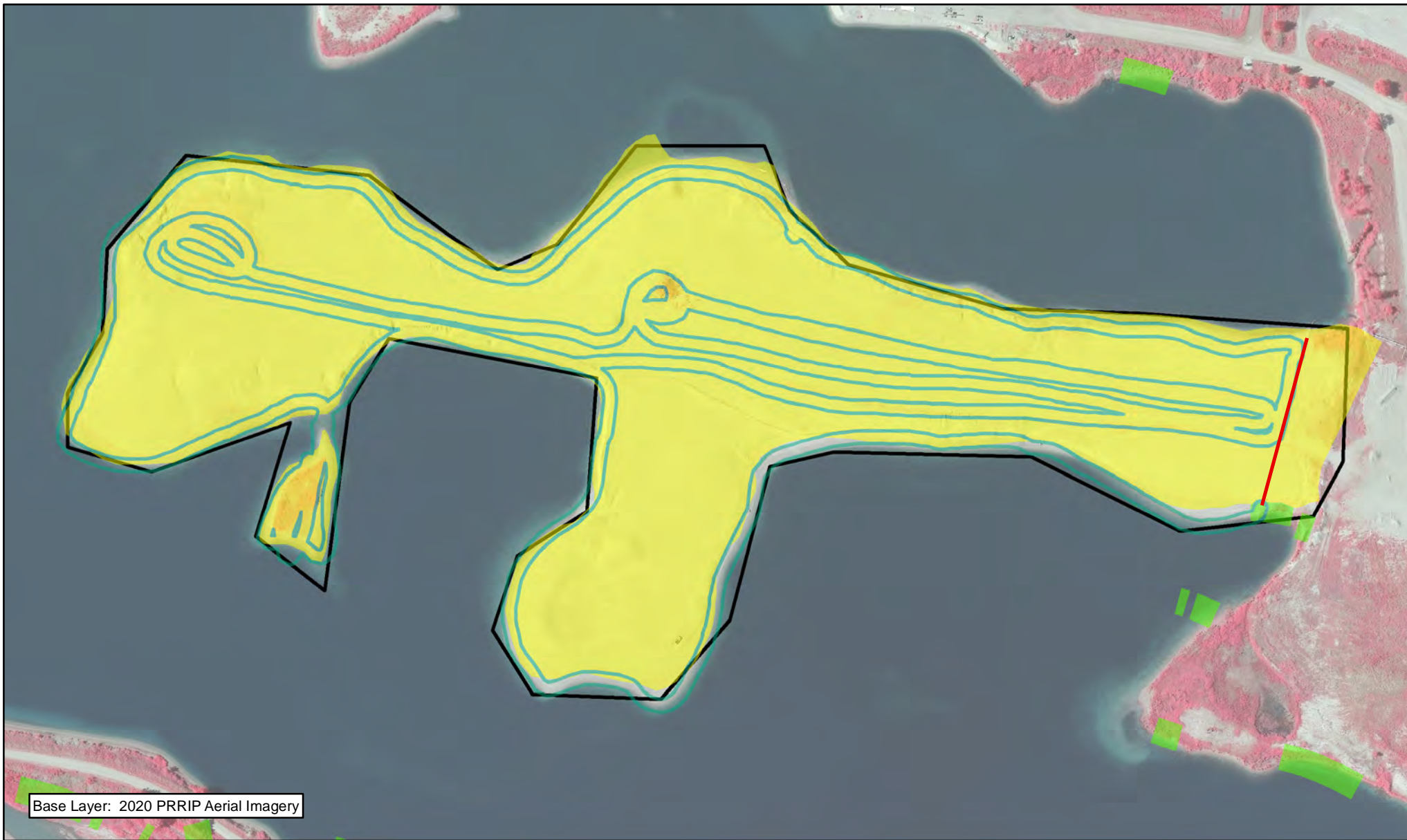


NON-COMPLEX  
TRACT 2009008  
FY 2020 ACTIVITIES

Date: 02/08/2021  
By: TRT

Figure 1










Base Layer: 2020 PRRIP Aerial Imagery



## Legend

-  Predator Fence Construction
-  PVWMA Phrag Control
-  Herbicide
-  Preemergent



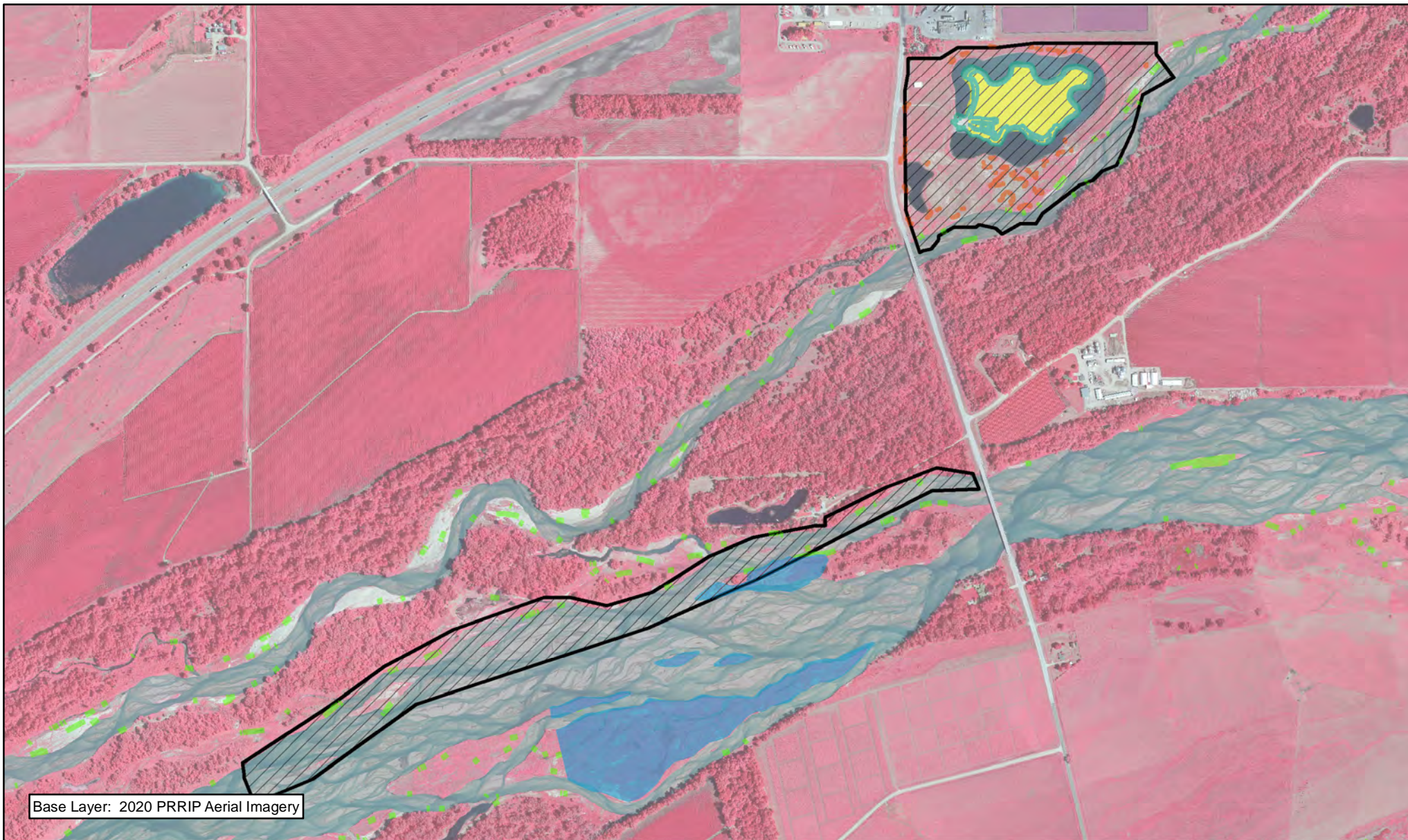
 0.1 Miles

NON-COMPLEX  
TRACT 2010002  
FY 2020 ACTIVITIES








Date: 02/08/2021  
By: TRT

Figure 2






### Legend

	Road Maintenance		Herbicide
	Noxious Weed Control		PVWMA Phrag Control
	Brush Control		Preemergent
	Disking		



 0.5 Miles

NON-COMPLEX  
TRACT 2011001  
FY 2020 ACTIVITIES

Date: 02/08/2021  
By: TRT

Figure 3








Base Layer: 2020 PRRIP Aerial Imagery




PLATTE RIVER  
RECOVERY IMPLEMENTATION PROGRAM

### Legend

-  Brush Control
-  Herbicide
-  Preemergent



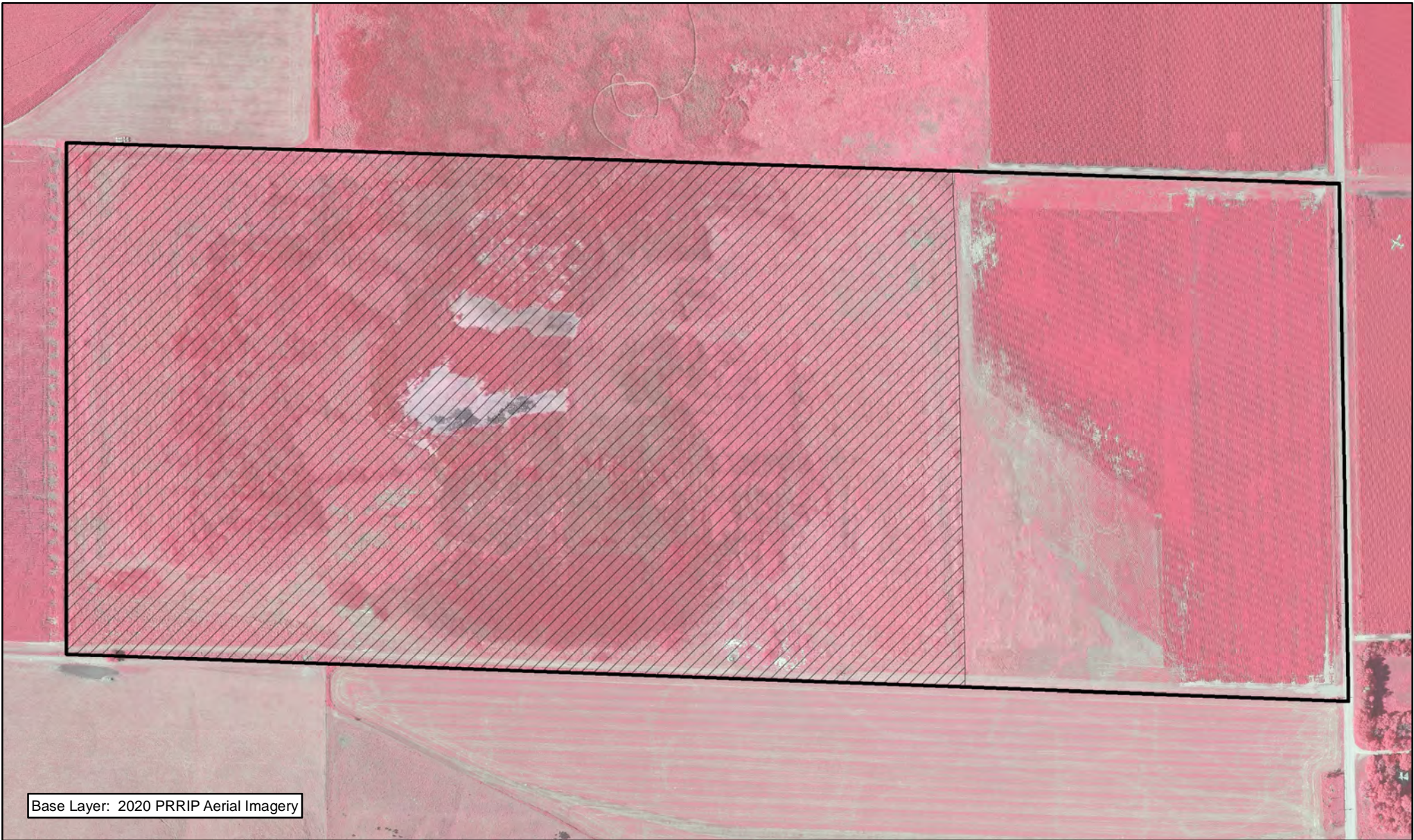
 Miles  
0.1

NON-COMPLEX  
TRACT 2011002  
FY 2020 ACTIVITIES

Date: 02/08/2020  
By: TRT

Figure 4






Base Layer: 2020 PRRIP Aerial Imagery

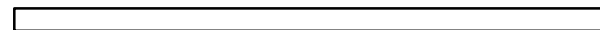


PLATTE RIVER  
RECOVERY IMPLEMENTATION PROGRAM

**Legend**

 Noxious Weed Control



 0.2 Miles

NON-COMPLEX  
TRACT 2012004  
FY 2020 ACTIVITIES

Date: 02/08/2020  
By: TRT

Figure 5









Base Layer: 2020 PRRIP Aerial Imagery



### Legend

-  Prescribed Fire
-  Noxious Weed Control
-  Crop-corn



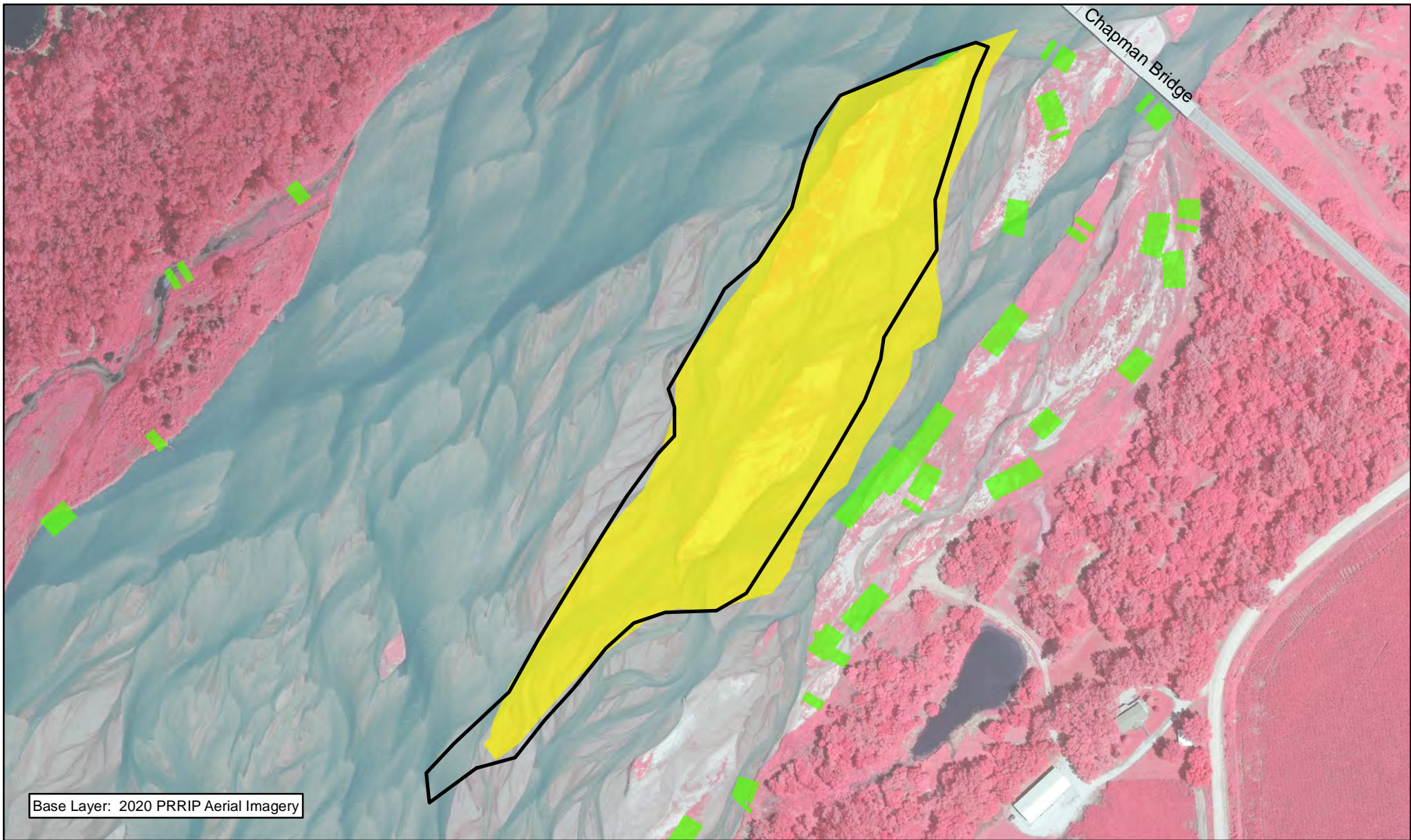
 0.2 Miles

NON-COMPLEX  
TRACT 2013001  
FY 2020 ACTIVITIES



Date: 02/08/2021  
By: TRT

Figure 6






**Legend**

-  PVWMA Phrag Control
-  Preemergent



 0.1 Miles

**NON-COMPLEX  
MCA ISLAND  
FY 2020 ACTIVITIES**

Date: 02/08/2020  
By: TRT

**Figure 7**

# 2020 Plum Creek "Complex" Annual Work Plan Report

## Platte River Recovery Implementation Program

For More Information Contact: Jason Farnsworth, [farnsworthj@headwaterscorp.com](mailto:farnsworthj@headwaterscorp.com) (308) 237-5728

### General Priorities

- \* **Good Neighbor Policy** - Conducted all actions in accordance with Program's good neighbor policy.

### Adaptive Management Priorities

- \* **Implementation of full scale sediment augmentation** - Augment 40,000 cubic yards of sediment through mechanical augmentation. Augmentation was completed upstream of the Plum Creek Complex near the J-2 Return.
- \* **Species Monitoring** – Monitored whooping crane use of riverine roosting habitat and least tern and piping plover use and productivity at off-channel sand and water nesting sites.

### Species Habitat Priorities

- \* **Improve Target Species Sand and Water Habitat** – Applied pre-emergent herbicide on OCSW peninsulas to maintain tern and plover nesting habitat. Controlled in-channel vegetation to maintain suitable unobstructed view widths for whooping cranes.
- \* **Protecting Other Species of Concern** – Identified presence of and determine methods to protect other species of concern during implementation of land-related activities.

### Operations and Maintenance Priorities

- \* **Basic Property Maintenance Obligations and Needs** – Fulfilled basic property ownership obligations and needs including boundary fence signage, road maintenance, and noxious weed control.
- \* **Agricultural Operations** – Oversight of grazing lease on Tract 2009003. Oversight of cropland/hay leases on Tract 2009007.

*NOTE: The budget section of this work plan only contains information for work items that are specific to these tracts. As such, tract-specific research and monitoring actions are presented but system-scale actions like target species and geomorphology/vegetation monitoring are not.*

**Priority Area: General****Item(s):** *Complex Land Interest and Complex-Level Planning*

No.	Management Activities	Budget Line Item	Completed	Cost (Estimated)	Actual Cost
PC 1	Coordination of Program land actions with neighboring landowners	N/A	Yes	N/A	N/A
PC 2	Coordinate with NPPD to identify and mitigate potential impacts to leased NPPD nesting islands	N/A	Yes	N/A	N/A

**Priority Area: Species Habitat****Item(s):** *Improve Target Species Sand and Water Habitat*

No.	Management Activities	Budget Line Item	Completed	Cost (Estimated)	Actual Cost
PC 3	Herbicide applications on OCSW peninsulas to maintain bare sand nesting habitat	LP-2	Yes	\$4,400	\$4,365
PC 4	Disking if necessary to provide in-channel vegetation control (71 ac)	LP-2	No	\$19,750	\$0

**Priority Area: Species Habitat****Item(s):** *Whooping Crane Grassland / Wet Meadow Habitat*

No.	Management Activities	Budget Line Item	Completed	Cost (Estimated)	Actual Cost
PC 5	No items	N/A	N/A	N/A	N/A



**Priority Area: *Species Habitat*****Item(s): *Other Species of Concern***

No.	Management Activities	Budget Line Item	Completed	Cost (Estimated)	Actual Cost
PC 6	Habitat and species surveys on properties where work will occur	N/A	Yes	N/A	N/A
PC 7	Coordination with USFWS and NGPC to identify and mitigate potential impacts associated with land activities	N/A	Yes	N/A	N/A

**Priority Area: Operations and Maintenance****Item(s): *Basic Property Maintenance Obligations and Needs***

No.	Management Activities	Budget Line Item	Completed	Cost (Estimated)	Actual Cost
PC 8	Fence and road maintenance	LP-4	Yes	\$1,500	\$2,003
PC 9	Noxious weed control	LP-4	Yes	\$4,300	\$3,429
PC 10	Lodge & Quonset utilities and maintenance	LP-4	Yes	\$5,600	\$5,705
PC 11	Mowing	LP-4	Yes	\$2,000	\$4,680

**Priority Area: Operations and Maintenance****Item(s): *Agricultural Operations***

No.	Management Activities	Budget Line Item	Completed	Cost (Estimated)	Actual Cost
PC 12	Oversight of grazing and cropland leases	N/A		N/A	N/A

**Property Identification Key:**

2009003 - PRRIP Dyer Tract

2009007 - PRRIP Cook Tract

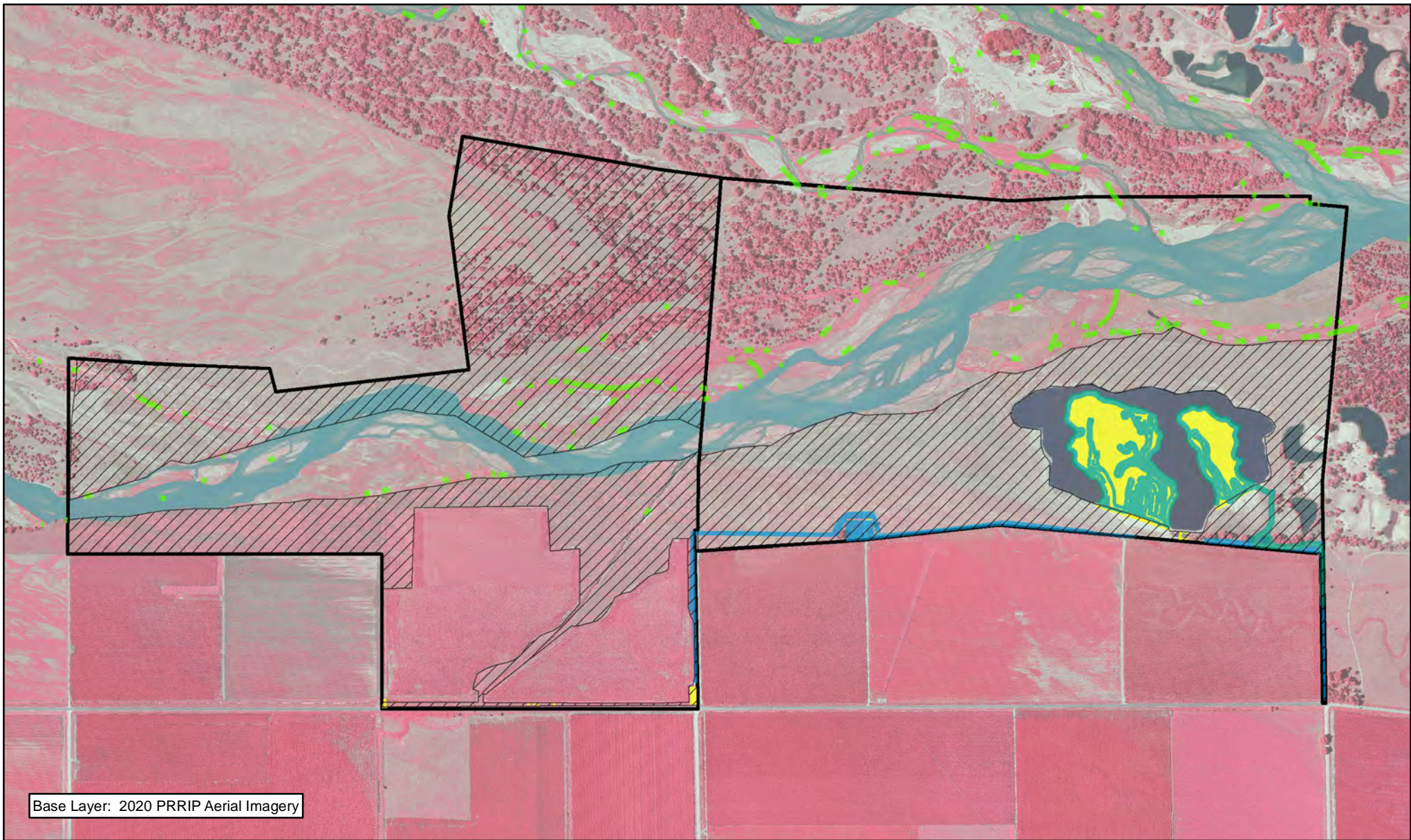
## 2020 Plum Creek Complex Budget Summary

### 2020 Expenditures by Program Budget Line Item

Priority Area	Item	Budget Line Item	Estimated Expenditure	2020 Expenditure
Species Habitat	Target Species Sand and Water Habitat	LP-2	\$24,150	\$4,365
Species Habitat	Whooping Crane Wet Meadow/ Grassland Habitat	LP-2	\$0	\$0
		<b>Subtotal</b>	<b>\$24,150</b>	<b>\$4,365</b>
Operations and Maintenance	Property Maintenance and Agricultural Operations	LP-4	\$13,400	\$15,817
		<b>Total</b>	<b>\$37,550</b>	<b>\$20,182</b>





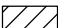
### 2020 Revenues

Tract	Item	Estimated Income	2020 Income
Tract 2009003	NPPD Habitat Lease	\$500	\$500
Tract 2009003	Grazing Income	\$3,300	\$3,300
Tract 2009007	Haying Income	\$3,000	\$3,580
Tract 2009007	Cropland Income	\$5,550	\$5,500
		<b>Total</b>	<b>\$12,880</b>




PLATTE RIVER  
RECOVERY IMPLEMENTATION PROGRAM

**Legend**

-  PVWMA Phrag Control
-  Herbicide
-  Preemergent
-  Shredding/Mowing
-  Noxious Weed Control



 Miles  
0.5

**PLUM CREEK COMPLEX  
FY 2020 ACTIVITIES**

Date: 02/08/2020  
By: TRT

**Figure 8**



# 2020 Cottonwood Ranch Complex Annual Work Plan Report

## Platte River Recovery Implementation Program

For More Information Contact: Jason Farnsworth, farnsworthj@headwaterscorp.com (308) 237-5728

### General Priorities

- \* **Good Neighbor Policy** - Conducted all actions in accordance with Program's good neighbor policy.

### Adaptive Management Priorities

- \* **Species Monitoring** – Monitored whooping crane use of riverine and off-channel palustrine wetland roosting habitat and least tern and piping plover use and productivity at off-channel sand and water nesting sites.

### Species Habitat Priorities

- \* **Maintain Target Species Sand and Water Habitat** – Applied pre-emergent herbicide on OCSW peninsula to maintain tern and plover nesting habitat. Controlled in-channel vegetation to maintain suitable unobstructed view widths for whooping cranes.
- \* *Broad-Scale Recharge Water Supply and Whooping Crane Habitat Project – Construction of berms and water control structures to allow for approximately 400 acres of ponded surface water in wet meadow areas south of the channel on Tracts 2008002 and 2010001.*
- \* *Management of grassland/wet meadow habitat for whooping cranes and sandhill cranes – Grazing will continue on Lloyd Island for the 2020 grazing season. Wet meadow areas in Section 16 T8N R19W (Tracts 2008002 and 2010001) will not be grazed/hayed during the 2020 due to Broad -Scale Recharge Water Supply and Whooping Crane Habitat Project construction. Grazing/haying management will resume as soon as project is complete.*
- \* **Protecting Other Species of Concern** – Identified presence of and determine methods to protect other species of concern during implementation of land-related activities.

## Operations and Maintenance Priorities

- \* **Basic Property Maintenance Obligations and Needs** – Fulfilled basic property ownership obligations and needs on Tracts 2008002, 2009006, and 2010001 including fence and road maintenance and noxious weed control.
- \* **Agricultural Operations** – Oversight of grazing/ haying leases on Tracts 2009006 and 2010001.

*NOTE: The budget section of this work plan only contains information for work items that are specific to these tracts. As such, tract-specific research and monitoring actions are presented but system-scale actions like target species and geomorphology/vegetation monitoring are not.*

### Priority Area: General

**Item(s):** *Complex Land Interest and Complex-Level Planning*

No.	Management Activities	Budget Line Item	Completed	Cost (Estimated)	Actual Cost
CR 1	Coordination of Program land actions with neighboring landowners	N/A	Yes	N/A	N/A

### Priority Area: Species Habitat

**Item(s):** *Improve Target Species Sand and Water Habitat*

No.	Management Activities	Budget Line Item	Completed	Cost (Estimated)	Actual Cost
CR 2	Tract 2008002 Pre-emergent herbicide application on plover nesting habitat and OCSW complex	LP-2	Yes	\$3,000	\$4,687
CR 3	Disking if necessary to provide in-channel vegetation control -(~50 acres)	LP-2	No	\$13,900	\$0

**Priority Area: Species Habitat****Item(s):** *Whooping Crane Grassland / Wet Meadow Habitat*

No.	Management Activities	Budget Line Item	Completed	Cost (Estimated)	Actual Cost
CR4	Tract 2008002 Prescribed burn (86 ac)	LP-2	Yes	\$3,698	\$4,043
CR 5	Tract 2008002 Prescribed burn (195 ac)	LP-2	No	\$8,385	\$0

**Item(s): Other Species of Concern**

No.	Management Activities	Budget Line Item	Completed	Cost (Estimated)	Actual Cost
CR 6	Habitat and species surveys on properties where work will occur	N/A	Yes	N/A	N/A
CR 7	Coordination with USFWS and NGPC to identify and mitigate potential impacts associated with land activities	N/A	Yes	N/A	N/A

**Priority Area: Operations and Maintenance****Item(s):** *Basic Property Maintenance Obligations and Needs*

No.	Management Activities	Budget Line Item	Completed	Cost (Estimated)	Actual Cost
CR 8	Tract 2010001 N Fence Replacement	LP-4	Yes	\$13,200	\$13,586
CR 9	Fence and road maintenance	LP-4	Yes	\$5,000	\$4,954
CR 10	Noxious weed control	LP-4	Yes	\$14,000	\$12,459
CR 11	Mowing	LP-4	No	\$1,000	\$0
CR 12	Tract 2010001 Electricity	LP-4	Yes	\$2,500	\$1,022

## Priority Area: Operations and Maintenance

**Item(s):** *Agricultural Operations*

No.	Management Activities	Budget Line Item	Completed	Cost (Estimated)	Actual Cost
CR 13	Tract 2009006 grazing lease oversight	N/A	Yes	N/A	N/A
CR 14	Tract 2010001 grazing lease oversight	N/A	Yes	N/A	N/A
CR 15	Tract 2010001 haying lease oversight	N/A	Yes	N/A	N/A
CR 16	Tract 20008002 grazing& haying lease planning & oversight	N/A	Yes	N/A	N/A

### Property Identification Key:

2008002 - NPPD Cottonwood Ranch

2009006 - PRRIP Stall Tract

2010001 - PRRIP Morse Tract

## 2020 Cottonwood Ranch Complex Budget Summary

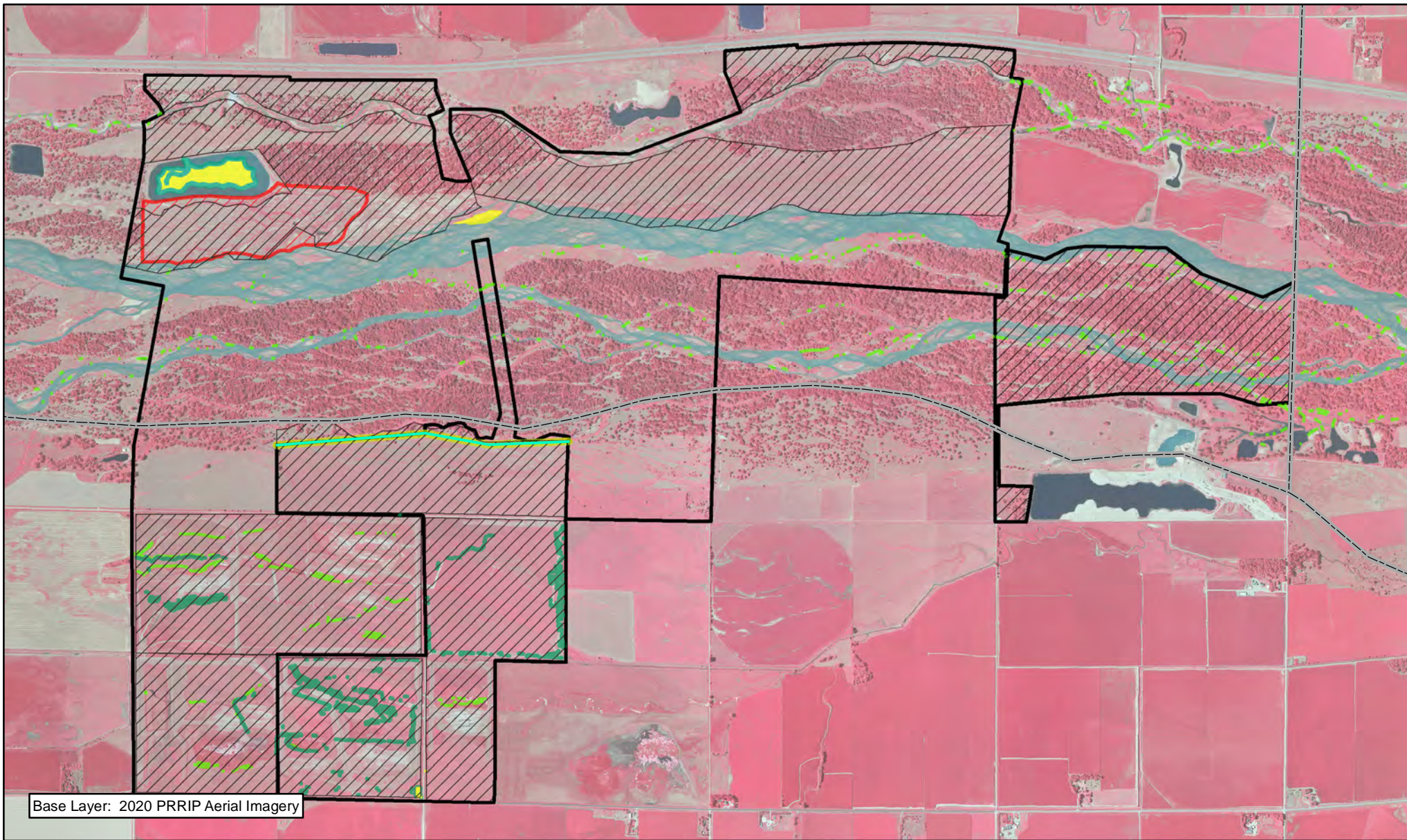
### 2020 Expenditures by Program Budget Line Item

Priority Area	Item	Budget Line Item	Estimated Expenditure	2020 Expenditure
Species Habitat	Target Species Sand and Water Habitat	LP-2	\$16,900	\$4,687
Species Habitat	Whooping Crane Wet Meadow/ Grassland Habitat	LP-2	\$12,083	\$4,043
<b>Subtotal</b>			<b>\$28,983</b>	<b>\$8,730</b>
Operations and Maintenance	Property Maintenance and Agricultural Operations	LP-4	\$35,700	\$32,021
<b>Total</b>			<b>\$64,683</b>	<b>\$40,751</b>

### 2020 Revenues

Tract	Item	Estimated Income	2020 Income
Tract 2009006	Grazing Income	\$2,000	\$0
Tract 2010001	Grazing Income	\$5,775	\$5,775
Tract 2010001 SE 1/4	Grazing Income	\$3,360	\$0
Tract 2010001	Haying Income	\$3,000	\$1,174
<b>Total</b>		<b>\$14,135</b>	<b>\$6,949</b>





### Legend

- |                             |                      |
|-----------------------------|----------------------|
| County                      | PVWMA Phrag Control  |
| Barbwire Fence Construction | Noxious Weed Control |
| Tree/Brush Mulching         | Herbicide            |
| Cattail/Phragmites Spraying | Preemergent          |
| Prescribed Fire             | Bridge Repair        |



1 Miles

### COTTONWOOD RANCH COMPLEX FY 2020 ACTIVITIES

Date: 02/08/2020  
By: TRT

Figure 9

# 2020 Elm Creek Complex Annual Work Plan Report

## Platte River Recovery Implementation Program

For More Information Contact: Jason Farnsworth, farnsworthj@headwaterscorp.com (308) 237-5728

### General Priorities

- \* ***Good Neighbor Policy*** – Conducted all actions in accordance with Program's good neighbor policy.

### Adaptive Management Priorities

- \* ***Species Monitoring*** – Monitored whooping crane use of in-channel roosting habitat and least tern and piping plover use and productivity at off-channel sand and water nesting sites.

### Species Habitat Priorities

- \* ***Maintain Target Species Sand and Water Habitat*** – Controlled in-channel vegetation to maintain suitable unobstructed view widths for whooping cranes.
- \* ***Protecting Other Species of Concern*** – Identified presence of and determine methods to protect other species of concern during implementation of land-related activities.

### Operations and Maintenance Priorities

- \* ***Basic Property Maintenance Obligations and Needs*** – Fulfilled basic property ownership obligations and needs on Tracts 2009002, 2009005, 2012001 and 2012002 including fence and road maintenance and noxious weed control.
- \* ***Agricultural Operations*** – Oversight of grazing/ haying leases on Tracts 2009005, 2012001 and 2012002.

*NOTE: The budget section of this work plan only contains information for work items that are specific to these tracts. As such, tract-specific research and monitoring actions are presented but system-scale actions like target species and geomorphology/vegetation monitoring are not.*

**Priority Area: General****Item(s):** *Complex Land Interest and Complex-Level Planning*

No.	Management Activities	Budget Line Item	Completed	Cost (Estimated)	Actual Cost
EC 1	Coordination of Program land actions with neighboring landowners	N/A	Yes	N/A	N/A

**Priority Area: Species Habitat****Item(s):** *Improve Target Species Sand and Water Habitat*

No.	Management Activities	Budget Line Item	Completed	Cost (Estimated)	Actual Cost
EC 2	In-channel cross disking (below diversion) and overbank mowing to maintain active channel and unobstructed view widths (50 acres)	LP-2	No	\$13,900	\$0

**Priority Area: Species Habitat****Item(s):** *Whooping Crane Grassland / Wet Meadow Habitat*

No.	Management Activities	Budget Line Item	Completed	Cost (Estimated)	Actual Cost
EC 3	Tract 2009005 Prescribed burn (95 ac)	LP-2	Yes	\$4,085	\$3,958
EC 4	Tract 2012001 Prescribed burn (64 ac)	LP-2	Yes	\$2,752	\$4,323
EC 5	Tract 2012002 Prescribed burn (158 ac)	LP-2	Yes	\$6,794	\$3,222



**Priority Area: Species Habitat**  
**Item(s): Other Species of Concern**

No.	Management Activities	Budget Line Item	Completed	Cost (Estimated)	Actual Cost
EC 6	Habitat and species surveys on properties where work will occur	N/A	Yes	N/A	N/A
EC 7	Coordination with USFWS and NGPC to identify and mitigate potential impacts associated with land activities	N/A	Yes	N/A	N/A

**Priority Area: Operations and Maintenance**  
**Item(s): Basic Property Maintenance Obligations and Needs**

No.	Management Activities	Budget Line Item	Completed	Cost (Estimated)	Actual Cost
EC 8	Tract 2009002 building utilities and maintenance	LP-4	Yes	\$2,500	\$3,020
EC 9	Fence and road maintenance	LP-4	Yes	\$1,000	\$1,488
EC 10	Mowing	LP-4	Yes	\$1,300	\$2,790
EC 11	Noxious weed control	LP-4	Yes	\$15,000	\$6,543

**Priority Area: Operations and Maintenance**  
**Item(s): Agricultural Operations**

No.	Management Activities	Budget Line Item	Completed	Cost (Estimated)	Actual Cost
EC 12	Tract 2009002 Crop oversight	N/A	Yes	N/A	N/A
EC 13	Tract 2009005 grazing lease oversight	N/A	Yes	N/A	N/A
EC 14	Tract 2012001 haying lease oversight	N/A	Yes	N/A	N/A
EC 15	Tract 2012002 grazing lease oversight	N/A	Yes	N/A	N/A

**Property Identification Key:**

2009002 – PRRIP Bartels Tract

2009005 – PRRIP McCormick Tract

2012001 – PRRIP Sullwold Tract

2012002 – PRRIP Johns Tract

2015003 – Blue Hole East

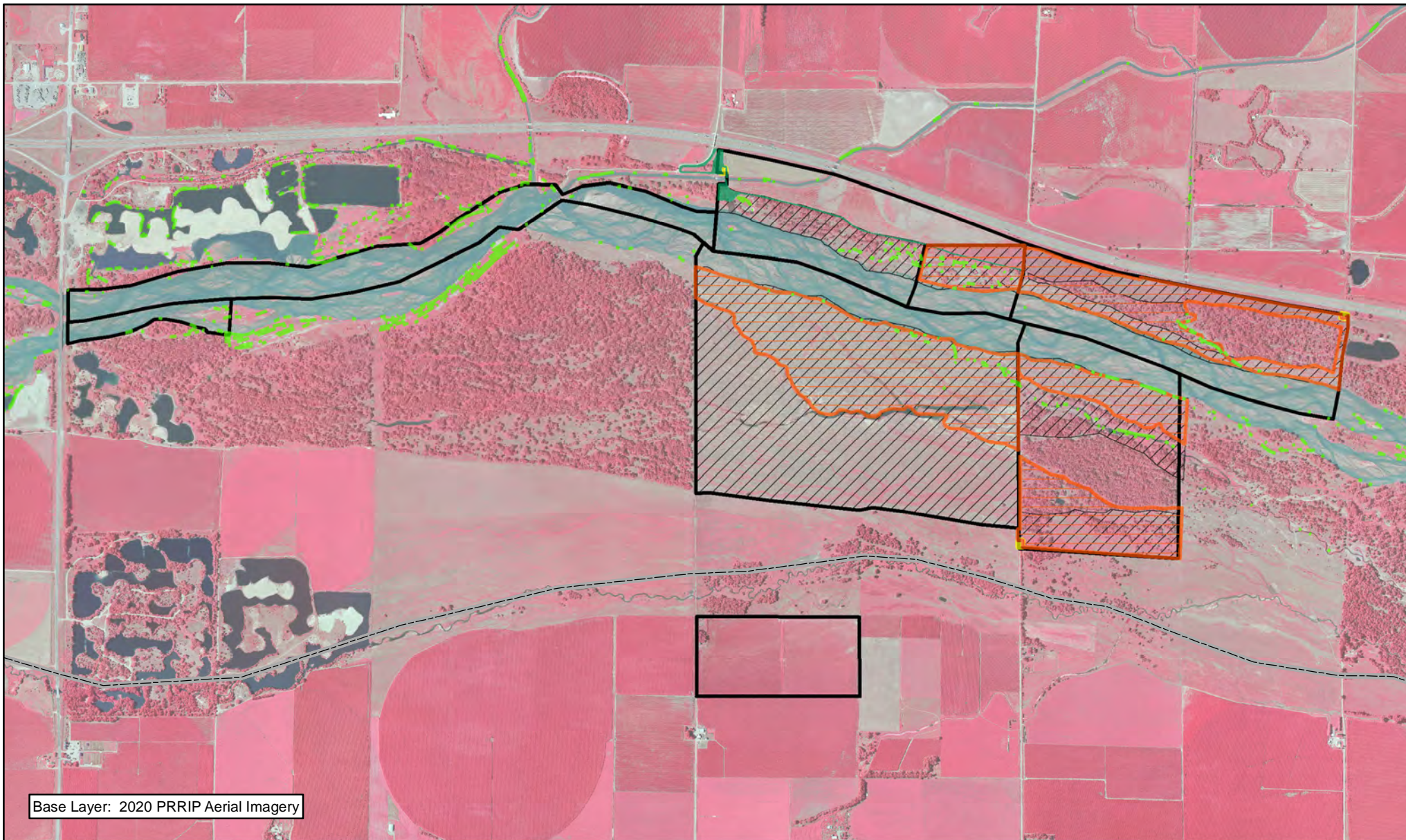
## 2020 Elm Creek Complex Budget Summary

### 2020 Expenditures by Program Budget Line Item

Priority Area	Item	Budget Line Item	Estimated Expenditure	2020 Expenditure
Species Habitat	Target Species Sand and Water Habitat	LP-2	\$13,900	\$0
Species Habitat	Whooping Crane Wet Meadow/ Grassland Habitat	LP-2	\$13,631	\$11,503
		<b>Subtotal</b>	<b>\$27,531</b>	<b>\$11,503</b>
Operations and Maintenance	Property Maintenance and Agricultural Operations	LP-4	\$19,800	\$13,841
		<b>Total</b>	<b>\$47,331</b>	<b>\$25,344</b>

### 2020 Revenues

Tract	Item	Estimated Income	2020 Income
Tract 2009002	Crop Income	\$4,350	\$4,350
Tract 2009005	Grazing Income	\$3,500	\$3,500
Tract 2012001	Haying Income	\$2,000	\$0
Tract 2012002	Grazing Income	\$8,100	\$8,100
		<b>Total</b>	<b>\$15,950</b>



Base Layer: 2020 PRRIP Aerial Imagery



### Legend

- |                     |                      |
|---------------------|----------------------|
| County              | Noxious Weed Control |
| Preemergent         | Prescribed Fire      |
| Bank Stabilization  | Shredding/Mowing     |
| PVWMA Phrag Control |                      |



Miles

1

## ELM CREEK COMPLEX FY 2020 ACTIVITIES

Date: 02/08/2021  
By: TRT

Figure 10

## 2020 Jerry F. Kenny Pawnee Complex Annual Work Plan Report

### Platte River Recovery Implementation Program

For More Information Contact: Jason Farnsworth, farnsworthj@headwaterscorp.com (308) 237-5728

#### General Priorities

- \* **Good Neighbor Policy** – Conducted all actions in accordance with Program's good neighbor policy.

#### Adaptive Management Priorities

- \* **Species Monitoring** – Monitored whooping crane use of in-channel roosting habitat.

#### Species Habitat Priorities

- \* **Maintain Target Species Sand and Water Habitat** – Control in-channel vegetation to maintain suitable unobstructed view widths for whooping cranes. Remove vegetation from overbank areas adjacent to the channel to promote channel widening through lateral erosion.
- \* **Protecting Other Species of Concern** – Identified presence of and determine methods to protect other species of concern during implementation of land-related activities.

#### Operations and Maintenance Priorities

- \* **Basic Property Maintenance Obligations and Needs** – Fulfilled basic property ownership obligations and needs on Tracts 2014002 and 2015002.
- \* **Agricultural Operations** – Oversight of grazing/ haying leases on Tracts 2014002 and 2015002.

*NOTE: The budget section of this work plan only contains information for work items that are specific to these tracts. As such, tract-specific research and monitoring actions are presented but system-scale actions like target species and geomorphology/vegetation monitoring are not.*



**Priority Area: General****Item(s):** *Complex Land Interest and Good Neighbor Policy*

No.	Management Activities	Budget Line Item	Completed	Cost (Estimated)	Actual Cost
PAW 1	Coordination of Program land actions with neighboring landowners	N/A	Yes	N/A	N/A

**Priority Area: Adaptive Management & Target Species Habitat****Item(s):** *Tern, Plover and Whooping Crane Riverine Habitat Experiments*

No.	Management Activities	Budget Line Item	Completed	Cost (Estimated)	Actual Cost
PAW 2	Herbicide treatment on south bank to kill vegetation prior to disking	LP-2	Yes	\$2,000	\$1,838
PAW 3	In-channel cross disking and overbank mowing to maintain active channel and unobstructed view widths (100 ac)	LP-2	Yes	\$27,800	\$28,500

**Priority Area: Species Habitat****Item(s):** *Other Species of Concern*

No.	Management Activities	Budget Line Item	Completed	Cost (Estimated)	Actual Cost
PAW 4	Habitat and species surveys on properties where work will occur	N/A	Yes	N/A	N/A
PAW 5	Coordination with USFWS and NGPC to identify and mitigate potential impacts associated with land activities	N/A	Yes	N/A	N/A

**Priority Area: Operations and Maintenance****Item(s):** *Basic Property Maintenance Obligations and Needs*

No.	Management Activities	Budget Line Item	Completed	Cost (Estimated)	Actual Cost
PAW 6	Noxious weed control - (~675 acres)	LP-4	Yes	\$4,500	\$1,569
PAW 7	Fence and road maintenance	LP-4	Yes	\$2,000	\$987

**Priority Area: Operations and Maintenance****Item(s):** *Agricultural Operations*

No.	Management Activities	Budget Line Item	Completed	Cost (Estimated)	Actual Cost
PAW 8	Tract 2014002 oversight	N/A	Yes	N/A	N/A
PAW 9	Tract 2015002 oversight	N/A	Yes	N/A	N/A

**Property Identification Key:**

2014002 - PRRIP Volentine Tract

2015002 - PRRIP BELF Tract

Agreement #10 (1605) - P. Broadfoot

Agreement #11 (1008) - NE DOR Lease

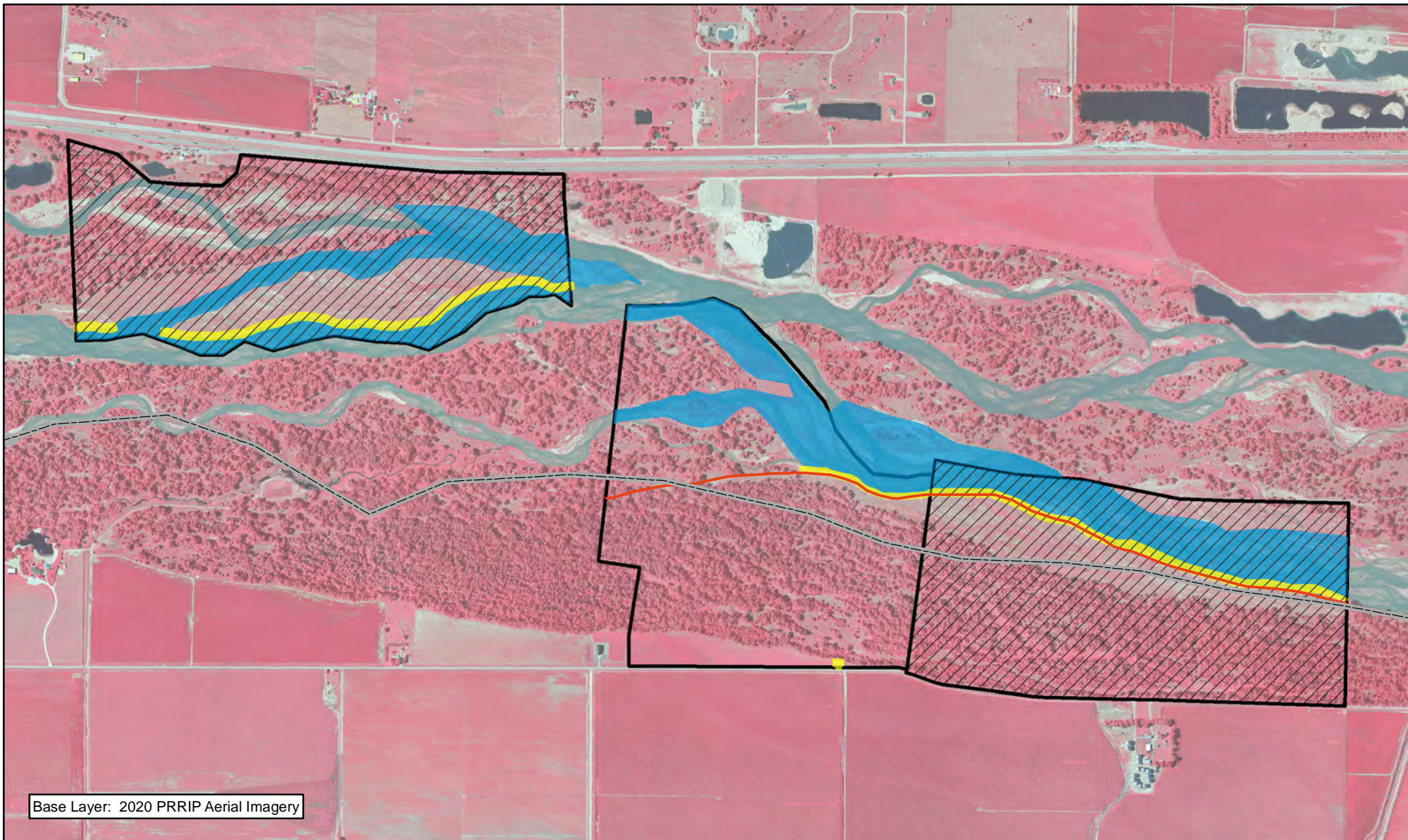
## 2020 Jerry F. Kenny Pawnee Complex Budget Summary

### 2020 Expenditures by Program Budget Line Item

Priority Area	Item	Budget Line Item	Estimated Expenditure	2020 Expenditure
Adaptive Management & Species Habitat	Target Species Sand and Water Habitat	LP-2	\$29,800	\$30,338
Operations and Maintenance	Property Maintenance and Agricultural Operations	LP-4	\$6,500	\$2,556
		<b>Total</b>	<b>\$36,300</b>	<b>\$32,894</b>

### 2020 Revenues






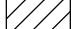
Tract	Item	Estimated Income	2020 Income
Tract 2015002	Crop Income	\$585	\$585
Tract 2015002	Grazing Income	\$0	\$0
Tract 2014002	Grazing Income	\$0	\$0
	<b>Total</b>	<b>\$585</b>	<b>\$585</b>




Base Layer: 2020 PRRIP Aerial Imagery



### Legend

-  County
-  Fence Removal
-  Preemergent
-  Disking
-  PVWMA Phrag Control
-  Noxious Weed Control



 Miles  
0.5

JERRY F. KENNY  
PAWNEE COMPLEX  
FY 2020 ACTIVITIES

Date: 02/08/2020  
By: TRT

Figure 11



# 2020 Fort Kearny Complex Annual Work Plan Report

## Platte River Recovery Implementation Program

For More Information Contact: Jason Farnsworth, farnsworthj@headwaterscorp.com (308) 237-5728

### General Priorities

- \* **Good Neighbor Policy** - Conducted all actions in accordance with Program's good neighbor policy.

### Adaptive Management Priorities

- \* **Species Monitoring** – Monitored whooping crane use of off-channel palustrine wetlands and in-channel roosting habitat.

### Species Habitat Priorities

- \* **Maintain Target Species Sand and Water Habitat** – Controlled in-channel vegetation to maintain suitable unobstructed view widths for whooping cranes. Remove vegetation from overbank areas adjacent to the channel to promote channel widening through lateral erosion.
- \* **Protecting Other Species of Concern** – Identified presence of and determine methods to protect other species of concern during implementation of land-related activities.

### Operations and Maintenance Priorities

- \* **Basic Property Maintenance Obligations and Needs** – Fulfilled basic property ownership obligations and needs on Tracts 2008001, 2009001, 2009004, 2010003, 2012003 and 2015001 including fence and road maintenance and noxious weed control.
- \* **Agricultural Operations** – Oversight of grazing/haying leases on Tracts 2008001, 2012003, 2009001, 2009004, and 2015001.

*NOTE: The budget section of this work plan only contains information for work items that are specific to these tracts. As such, tract-specific research and monitoring actions are presented but system-scale actions like target species and geomorphology/vegetation monitoring are not.*

**Priority Area: General****Item(s):** *Complex Land Interest and Good Neighbor Policy*

No.	Management Activities	Budget Line Item	Completed	Cost (Estimated)	Actual Cost
FK 1	Coordination of Program land actions with neighboring landowners	N/A	Yes	N/A	N/A

**Priority Area: Species Habitat****Item(s):** *Improve Target Species Sand and Water Habitat*

No.	Management Activities	Budget Line Item	Completed	Cost (Estimated)	Actual Cost
FK 2	Disking if necessary to provide in-channel vegetation control (~83 ac)	LP-2	Yes	\$23,075	\$13,350

**Priority Area: Species Habitat****Item(s):** *Whooping Crane Grassland / Wet Meadow Habitat*

No.	Management Activities	Budget Line Item	Completed	Cost (Estimated)	Actual Cost
FK 3	Tract 2009001 Annual electrical service fee at irrigation well to supplement water to wetland	LP-2	Yes	\$5,400	\$804
FK 4	Tract 2008001-South Prescribe burn (116 ac)	LP-2	No	\$4,988	\$0
FK 5	Tract 2009001- Prescribe burn (174 ac)	LP-2	Yes	\$7,482	\$7,164
FK 6	Tract 2015001 NE unit Prescribe burn (65 ac)	LP-2	Yes	\$2,795	\$2,692

**Priority Area: Species Habitat****Item(s):** *Other Species of Concern*

No.	Management Activities	Budget Line Item	Completed	Cost (Estimated)	Actual Cost
FK 7	Habitat and species surveys on properties where work will occur	N/A	Yes	N/A	N/A
FK 8	Coordination with USFWS and NGPC to identify and mitigate potential impacts associated with land activities	N/A	Yes	N/A	N/A

**Priority Area: Operations and Maintenance****Item(s):** *Basic Property Maintenance Obligations and Needs*

No.	Management Activities	Budget Line Item	Completed	Cost (Estimated)	Actual Cost
FK 9	Tract 2009004 & 2015001 Electricity	LP-4	Yes	\$600	\$915
FK 10	Noxious weed control	LP-4	Yes	\$13,000	\$7,148
FK 11	Fence and road maintenance	LP-4	Yes	\$4,500	\$4,295
FK 12	Mowing	LP-4	No	\$1,000	\$0

**Item(s):** *Agricultural Operations*

No.	Management Activities	Budget Line Item	Completed	Cost (Estimated)	Actual Cost
FK 13	Tract 2008001 grazing lease oversight	N/A	Yes	N/A	N/A
FK 14	Tract 2012003 grazing lease oversight	N/A	Yes	N/A	N/A
FK 15	Tract 2015001 grazing lease oversight	N/A	Yes	N/A	N/A

**Property Identification Key:**

2008001 – PRRIP Wyoming Property

2009001 – PRRIP Fox Tract

2009004 – PRRIP Hostetler Tract

2010003 – PRRIP Sherrerd/Clark Easement

2012003 – PRRIP Blessing Tract

2015001 – PRRIP Speidell Tract



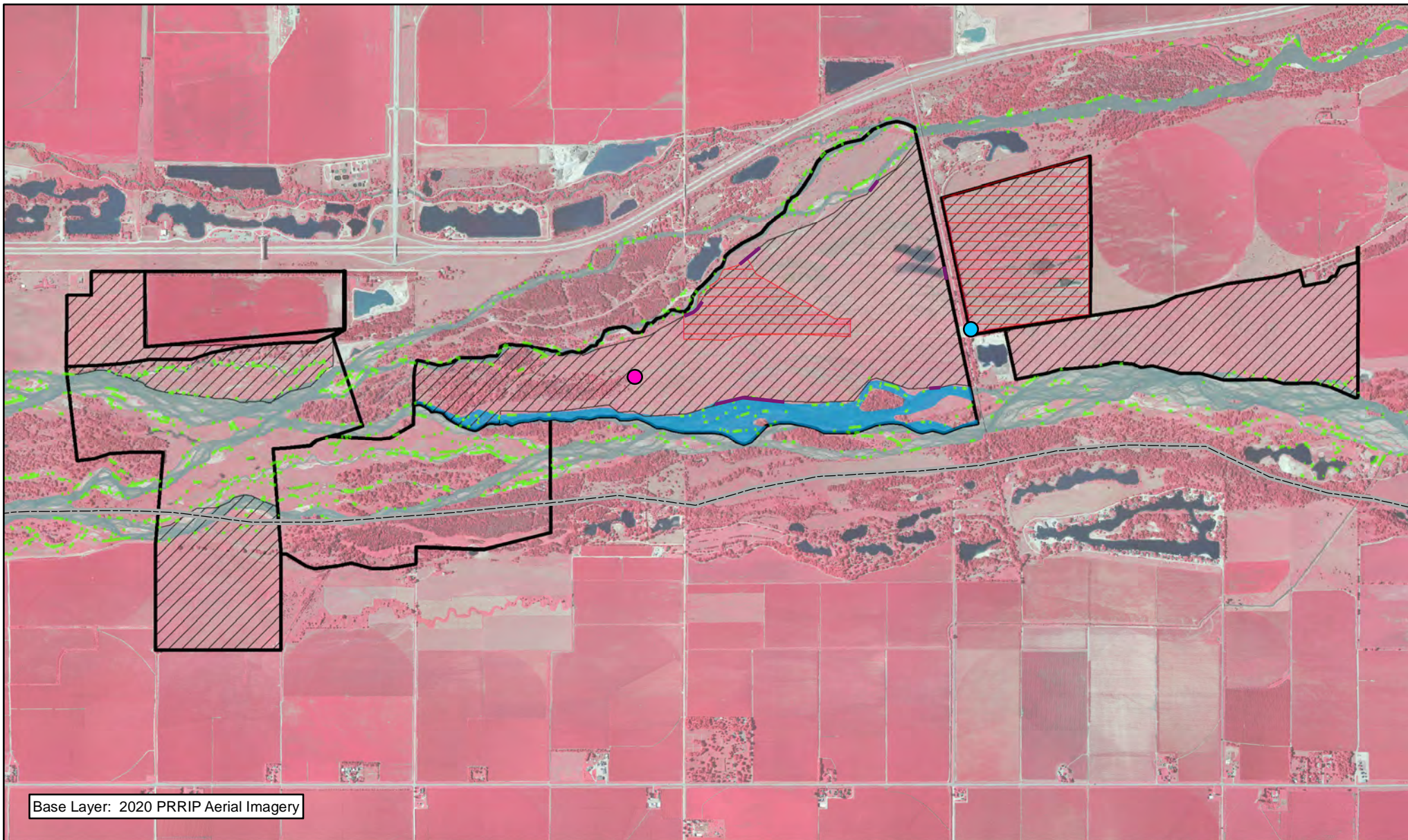
## 2020 Ft Kearny Complex Budget Summary

### 2020 Expenditures by Program Budget Line Item

Priority Area	Item	Budget Line Item	Estimated Expenditure	2020 Expenditure
Species Habitat	Improve Sand and Water Habitat	LP-2	\$23,075	\$13,350
Species Habitat	Whooping Crane Wet Meadow/ Grassland Habitat	LP-2	\$20,665	\$10,660
<b>Subtotal</b>			<b>\$43,740</b>	<b>\$24,010</b>
Operations and Maintenance	Property Maintenance and Agricultural Operations	LP-4	\$19,100	\$12,358
<b>Total</b>			<b>\$62,840</b>	<b>\$36,368</b>

### 2020 Revenues

Tract	Item	Estimated Income	2020 Income
Tract 2008001 N & 2012003	Grazing Income	\$5,250	\$6,500
Tract 2008001 S	Haying Income	\$7,000	\$5,720
Tract 2009001	Grazing Income	\$7,500	\$7,150
Tract 2009004	Grazing Income	\$11,825	\$0
Tract 2012003	Cropland Income	\$1,800	\$1,800
Tract 2015001	Grazing Income	\$11,825	\$10,513
<b>Total</b>		<b>\$45,200</b>	<b>\$31,683</b>



### Legend

- |                      |                 |
|----------------------|-----------------|
| County               | Fence Repair    |
| Disking              | Well Repair     |
| PVWMA Phrag Control  | Windmill Repair |
| Noxious Weed Control |                 |
| Prescribed Fire      |                 |



Miles  
1

### FT. KEARNY COMPLEX FY 2020 ACTIVITIES

Date: 12/15/2020  
By: TRT

Figure 12

## **2020 Minden – Gibbon Management Agreement Annual Work Plan Report**

### **Platte River Recovery Implementation Program**

For More Information Contact: Jason Farnsworth, [farnsworthj@headwaterscorp.com](mailto:farnsworthj@headwaterscorp.com) (308) 237-5728

### **Adaptive Management Priorities**

- \* ***Species Monitoring*** – Monitored whooping crane use of in-channel roosting habitat.

### **Species Habitat Priorities**

- \* ***Maintain Target Species Sand and Water Habitat*** – Controlled in-channel vegetation to maintain suitable unobstructed view widths for whooping cranes.

**Priority Area: Species Habitat****Item(s):** *Improve Target Species Sand and Water Habitat*

No.	Management Activities	Budget Line Item	Completed	Cost (Estimated)	Actual Cost
M-G 1	Disking if necessary to provide in-channel vegetation control (~73 ac)	LP-2	Yes	\$20,295	\$24,000
M-G 2	Brush, tree, cattail herbicide spraying	LP-2	Yes	\$8,400	\$15,528

**Personnel Responsibility Key**

BS – Bruce Sackett (Director of Acquisitions)

DB – David Baasch (Director of Biological and Ecological Services)

JB – Justin Brei (Biosystems Engineer)

KW – Kevin Werbylo (Water Resource Engineer)

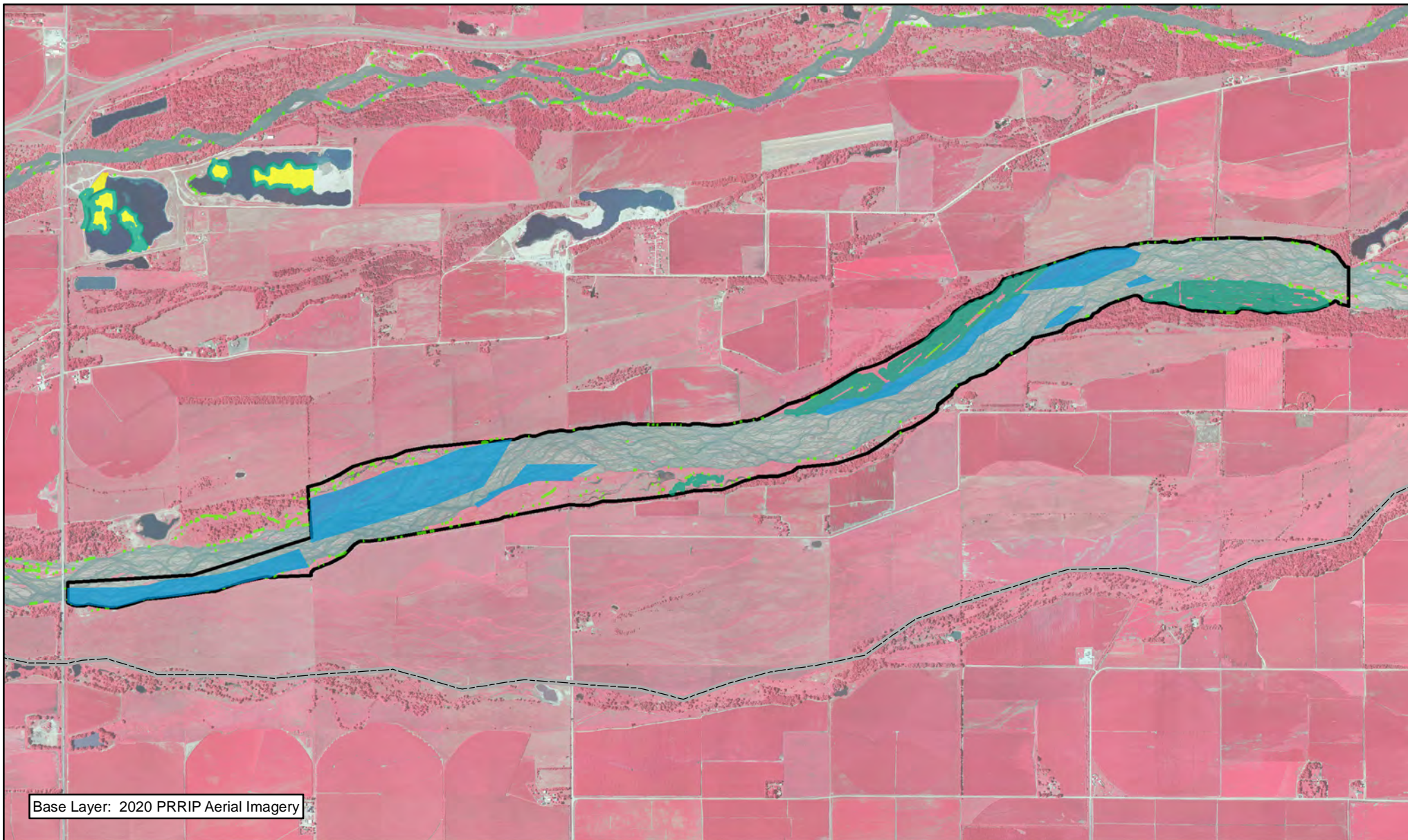
TT – Tim Tunnell (Senior Land Manager)

## 2020 Minden-Gibbon Management Agreement Budget Summary

### 2020 Expenditures by Program Budget Line Item






Priority Area	Item	Budget Line Item	Estimated Expenditure	2020 Expenditure
Species Habitat	Improve Target Species Sand and Water Habitat	LP-2	\$28,695	\$39,528
		<b>Total</b>	<b>\$28,695</b>	<b>\$39,528</b>






PLATTE RIVER  
RECOVERY IMPLEMENTATION PROGRAM

### Legend

-  County
-  Diking
-  Aerial Brush Control
-  PVWMA Phrag Control
-  Preemergent



 Miles

1

### MINDEN-GIBBON COMPLEX FY 2020 ACTIVITIES

Date: 02/08/2021  
By: TRT

Figure 13

# 2020 Clark Island Complex Annual Work Plan Report

## Platte River Recovery Implementation Program

For More Information Contact: Jason Farnsworth, farnsworthj@headwaterscorp.com (308) 237-5728

### General Priorities

- \* **Complex Land Interest** - Execute management agreements with conservation and private landowners that will allow the Program to implement necessary construction, maintenance and research/monitoring activities.
- \* **Good Neighbor Policy** - Conducted all actions in accordance with Program's good neighbor policy.

### Adaptive Management Priorities

- \* **Whooping Crane Riverine Habitat** – Designed and implemented vegetation clearing to provide unobstructed view widths above the Programs minimums
- \* **Species Monitoring** – Monitored whooping crane use of palustrine wetlands and in-channel roosting habitat.

### Species Habitat Priorities

- \* **Maintain Target Species Sand and Water Habitat** – Controlled in-channel vegetation to maintain suitable unobstructed view widths for whooping cranes.
- \* **Protecting Other Species of Concern** – Identified presence of and determine methods to protect other species of concern during implementation of land-related activities.

### Operations and Maintenance Priorities

- \* **Basic Property Maintenance Obligations and Needs** – Fulfilled basic property ownership obligations and needs on Tract 2010004 including fence and road maintenance and noxious weed control.
- \* **Agricultural Operations** – Oversight of cropland, grazing/ haying leases on Tract 2010004

*NOTE: The budget section of this work plan only contains information for work items that are specific to these tracts. As such, tract-specific research and monitoring actions are presented but system-scale actions like target species and geomorphology/vegetation monitoring are not.*

**Priority Area: General****Item(s):** *Complex Land Interest and Complex-Level Planning*

No.	Management Activities	Budget Line Item	Completed	Cost (Estimated)	Actual Cost
CI 1	Execution of management agreements w/ other private landowners for in-channel research and habitat construction activities	N/A	Yes	N/A	N/A
CI 2	Coordination of Program land actions with neighboring landowners	N/A	Yes	N/A	N/A

**Priority Area: Adaptive Management****Item(s):** *Off-Channel Tern and Plover Nesting Habitat*

No.	Management Activities	Budget Line Item	Completed	Cost (Estimated)	Actual Cost
CI 2	Engineering design, permitting and cost estimation	N/A	No	N/A	N/A

**Priority Area: Species Habitat****Item(s):** *Improve Target Species Sand and Water Habitat*

No.	Management Activities	Budget Line Item	Completed	Cost (Estimated)	Actual Cost
CI 3	Clear Trees & Burn, Bury on Islands (~23 ac)	LP-2	Yes	\$50,000	\$53,300
CI 4	Disking if necessary to provide in-channel vegetation control (~90 ac)	LP-2	Yes	\$25,020	\$29,100



**Priority Area: Species Habitat****Item(s):** *Whooping Crane Grassland / Wet Meadow Habitat*

No.	Management Activities	Budget Line Item	Completed	Cost (Estimated)	Actual Cost
CI 5	Tract 2018001 Russian Olive & Tree Pile Removal	LP-2	No	\$15,000	\$0
CI 6	Tract 2018001 Prescribe burn (82 ac)	LP-2	Yes	\$3,526	\$2,475
CI 7	Tract 2018001 Prescribe burn (11 ac)	LP-2	Yes	\$473	\$439

**Priority Area: Species Habitat****Item(s):** *Other Species of Concern*

No.	Management Activities	Budget Line Item	Completed	Cost (Estimated)	Actual Cost
CI 8	Habitat and species surveys on properties where work will occur	N/A	Yes	N/A	N/A
CI 9	Coordination with USFWS and NGPC to identify and mitigate potential impacts associated with land activities	N/A	Yes	N/A	N/A

**Priority Area: Operations and Maintenance****Item(s):** *Basic Property Maintenance Obligations and Needs*

No.	Management Activities	Budget Line Item	Completed	Cost (Estimated)	Actual Cost
CI 10	Fence and road maintenance	LP-4	No	\$10,000	\$0
CI 11	Noxious weed control	LP-4	Yes	\$3,000	\$1,084
CI 12	Mowing	LP-4	No	\$1,500	\$0

**Priority Area: Operations and Maintenance**

**Item(s):** *Agricultural Operations*

No.	Management Activities	Budget Line Item	Completed	Cost (Estimated)	Actual Cost
CI 13	Tract 2018001 grazing & haying lease oversight	N/A	Yes	N/A	N/A

**Property Identification Key:**

2018001 – PRRIP Dippel Tract

## 2020 Clark Island Complex Budget Summary

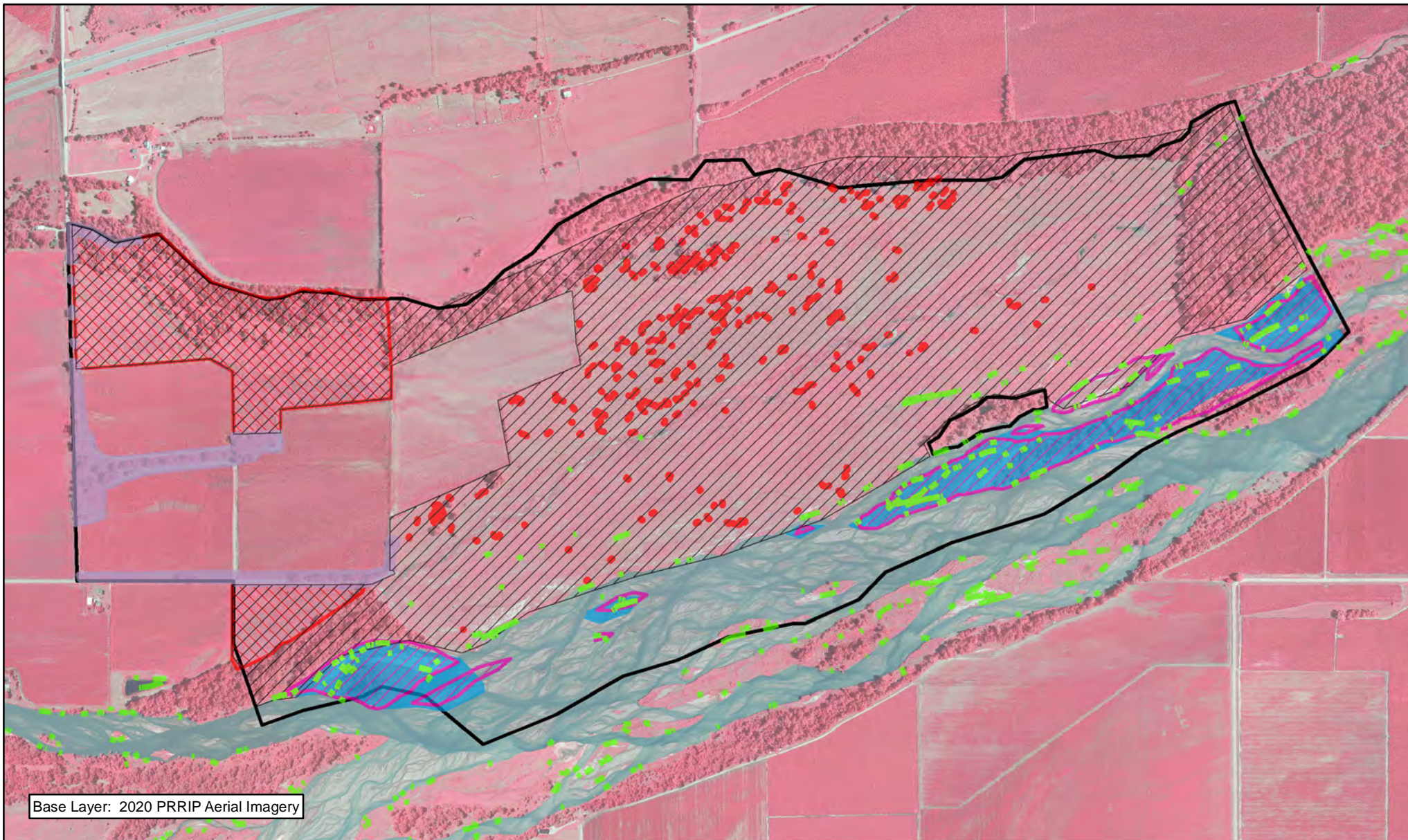
### 2020 Expenditures by Program Budget Line Item

Priority Area	Item	Budget Line Item	Estimated Expenditure	2020 Expenditure
Species Habitat	Improve Target Species Sand and Water Habitat	LP-2	\$75,020	\$82,400
Species Habitat	Whooping Crane Wet Meadow/ Grassland Habitat	LP-2	\$18,999	\$2,914
<b>Subtotal</b>			<b>\$94,019</b>	<b>\$85,314</b>
Operations and Maintenance	Property Maintenance and Agricultural Operations	LP-4	\$14,500	\$1,084
<b>Total</b>			<b>\$108,519</b>	<b>\$86,398</b>

### 2020 Revenues

Tract	Item	Estimated Income	2020 Income
Tract 2018001	Meadow Grazing Income	\$7,150	\$7,150
Tract 2018001	Accretion Grazing Income	\$6,000	\$7,040
Tract 2018001	Irrigated Cropland Cash Rent Income	\$19,140	\$19,140
Tract 2018001	Dryland Cropland Cash Rent Income	\$4,070	\$4,070
<b>Total</b>		<b>\$36,360</b>	<b>\$37,400</b>





Base Layer: 2020 PRRIP Aerial Imagery



PLATTE RIVER  
RECOVERY IMPLEMENTATION PROGRAM

#### Legend

- |               |                      |
|---------------|----------------------|
| County        | Disking              |
| Tree Removal  | Noxious Weed Control |
| Clear & Grub  | PVWMA Phrag Control  |
| Brush Control | Prescribed Fire      |



Miles

#### CLARK ISLAND COMPLEX FY 2020 ACTIVITIES

Date: 02/08/2021  
By: TRT

Figure 14

# 2020 Shoemaker Island Complex Annual Work Plan Report

## Platte River Recovery Implementation Program

For More Information Contact: Jason Farnsworth, farnsworthj@headwaterscorp.com (308) 237-5728

### General Priorities

- \* **Good Neighbor Policy** - Conducted all actions in accordance with Program's good neighbor policy.

### Adaptive Management Priorities

- \* **Species Monitoring** – Monitored whooping crane use of palustrine wetlands and in-channel roosting habitat.

### Species Habitat Priorities

- \* **Maintain Target Species Sand and Water Habitat** – Controlled in-channel vegetation to maintain suitable unobstructed view widths for whooping cranes.
- \* **Protecting Other Species of Concern** – Identified presence of and determine methods to protect other species of concern during implementation of land-related activities.

### Operations and Maintenance Priorities

- \* **Basic Property Maintenance Obligations and Needs** – Fulfilled basic property ownership obligations and needs on Tract 2010004 including fence and road maintenance and noxious weed control.
- \* **Agricultural Operations** – Oversight of grazing/ haying leases on Tract 2010004

*NOTE: The budget section of this work plan only contains information for work items that are specific to these tracts. As such, tract-specific research and monitoring actions are presented but system-scale actions like target species and geomorphology/vegetation monitoring are not.*



**Priority Area: General****Item(s):** *Complex Land Interest and Complex-Level Planning*

No.	Management Activities	Budget Line Item	Completed	Cost (Estimated)	Actual Cost
SI 1	Coordination of Program land actions with neighboring landowners	N/A	Yes	N/A	N/A

**Priority Area: Species Habitat****Item(s):** *Improve Target Species Sand and Water Habitat*

No.	Management Activities	Budget Line Item	Completed	Cost (Estimated)	Actual Cost
SI 2	Disking if necessary to provide in-channel vegetation control (~75 ac)	LP-2	Yes	\$20,850	\$7,425

**Priority Area: Species Habitat****Item(s):** *Whooping Crane Grassland / Wet Meadow Habitat*

No.	Management Activities	Budget Line Item	Completed	Cost (Estimated)	Actual Cost
SI 3	Tract 2010004-South Prescribe burn (191 ac)	LP-2	Yes	\$8,213	\$7,873
SI 4	Tract 2010004-South Prescribe burn (46 ac)	LP-2	Yes	\$1,978	\$1,515

**Priority Area: Species Habitat****Item(s):** *Other Species of Concern*

No.	Management Activities	Budget Line Item	Completed	Cost (Estimated)	Actual Cost
SI 5	Habitat and species surveys on properties where work will occur	N/A	Yes	N/A	N/A
SI 6	Coordination with USFWS and NGPC to identify and mitigate potential impacts associated with land activities	N/A	Yes	N/A	N/A

**Priority Area: Operations and Maintenance****Item(s):** *Basic Property Maintenance Obligations and Needs*

No.	Management Activities	Budget Line Item	Completed	Cost (Estimated)	Actual Cost
SI 7	Fence and road maintenance	LP-4	Yes	\$1,500	\$401
SI 8	Noxious weed control	LP-4	Yes	\$4,000	\$2,702
SI 9	Mowing	LP-4	No	\$1,500	\$0
SI 10	Tract2010004 Electricity	LP-4	Yes	\$200	\$186

**Priority Area: Operations and Maintenance****Item(s):** *Agricultural Operations*

No.	Management Activities	Budget Line Item	Completed	Cost (Estimated)	Actual Cost
SI 11	Tract 2010004 grazing & haying lease oversight	N/A		N/A	N/A

**Property Identification Key:**

2010004 – PRRIP Binfield Tract



## 2020 Shoemaker Island Complex Budget Summary

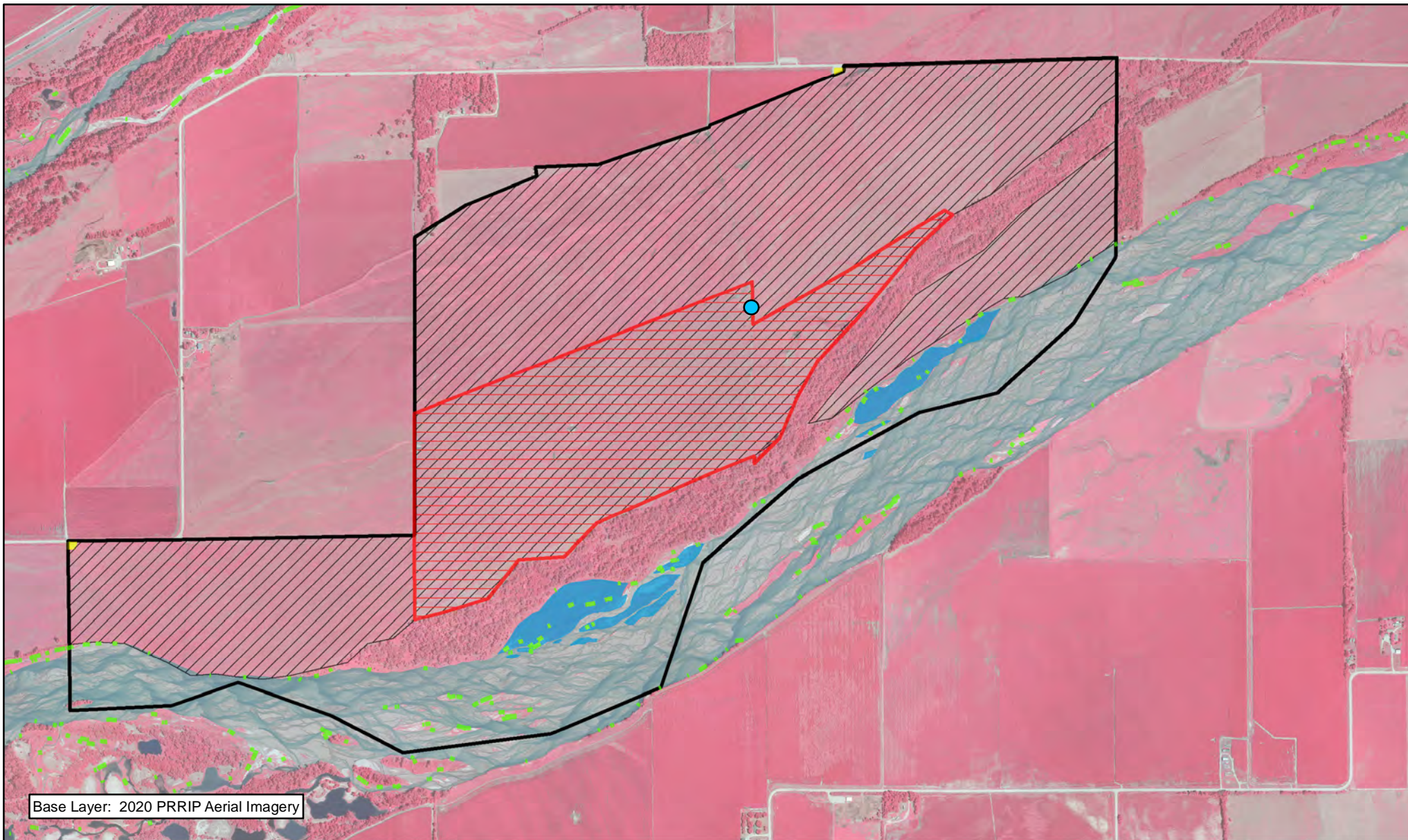
### 2020 Expenditures by Program Budget Line Item

Priority Area	Item	Budget Line Item	Estimated Expenditure	2020 Expenditure
Species Habitat	Improve Target Species Sand and Water Habitat	LP-2	\$20,850	\$7,425
Species Habitat	Whooping Crane Wet Meadow/ Grassland Habitat	LP-2	\$10,191	\$9,388
<b>Subtotal</b>			<b>\$31,041</b>	<b>\$16,813</b>

Operations and Maintenance	Property Maintenance and Agricultural Operations	LP-4	\$7,200	\$3,289
<b>Total</b>			<b>\$38,241</b>	<b>\$20,102</b>

### 2020 Revenues

Tract	Item	Estimated Income	2020 Income
Tract 2010004	Grazing & Haying Income	\$42,595	\$51,857
<b>Total</b>		<b>\$42,595</b>	<b>\$51,857</b>



### Legend

- |                              |                      |
|------------------------------|----------------------|
| County                       | Disking              |
| Solar Livestock Water Repair | PVWMA Phrag Control  |
| Preemergent                  | Noxious Weed Control |
| Brush Control                | Prescribed Fire      |



1 Miles

### SHOEMAKER ISLAND COMPLEX FY 2020 ACTIVITIES

Date: 02/08/2021  
By: TRT

Figure 15

## 2020 Chapman Complex Annual Work Plan Report

### Platte River Recovery Implementation Program

For More Information Contact: Jason Farnsworth, farnsworthj@headwaterscorp.com (308) 237-5728

#### General Priorities

- \* **Restoration and Management Planning** – Developed restoration and management plan for Chapman Complex.
- \* **Complex Land Interest** - Execute management agreements with conservation and private landowners that will allow the Program to implement necessary construction, maintenance and research/monitoring activities.
- \* **Good Neighbor Policy** - Conducted all actions in accordance with Program's good neighbor policy.

#### Adaptive Management Priorities

- \* **Whooping Crane Riverine Habitat** – Design and implement vegetation clearing to provide a range of unobstructed view widths above the Programs minimums
- \* **Species Monitoring** – Monitored whooping crane use of palustrine wetlands and in-channel roosting habitat.

#### Species Habitat Priorities

- \* **Improve Target Species Sand and Water Habitat** – Controlled in-channel vegetation to maintain suitable unobstructed view widths for whooping cranes.
- \* **Protecting Other Species of Concern** – Identified presence of and determine methods to protect other species of concern during implementation of land-related activities.

#### Operations and Maintenance Priorities

- \* **Basic Property Maintenance Obligations and Needs** – Fulfill basic property ownership obligations and needs on Tracts including fence and road maintenance and noxious weed control.
- \* **Agricultural Operations** – Oversight of grazing/ haying leases

NOTE: The budget section of this work plan only contains information for work items that are specific to these tracts. As such, tract-specific research and monitoring actions are presented but system-scale actions like target species and geomorphology/vegetation

monitoring are not.

**Priority Area: General**

**Item(s):** *Complex Land Interest and Complex-Level Planning*

No.	Management Activities	Budget Line Item	Completed	Cost (Estimated)	Actual Cost
CC 1	Restoration and Management Planning for Chapman Complex	N/A	Yes	N/A	N/A
CC 2	Execution of management agreements w/ other private landowners for in-channel research and habitat construction activities	N/A	No	N/A	N/A
CC 3	Coordination of Program land actions with neighboring landowners	N/A	Yes	N/A	N/A

**Priority Area: Species Habitat**

**Item(s):** *Improve Target Species Sand and Water Habitat*

No.	Management Activities	Budget Line Item	Completed	Cost (Estimated)	Actual Cost
CC 4	Clear Trees & Burn, Bury on Island (~80 ac)	LP-2	No	\$160,000	\$0
CC 5	Construct 10 acres of on-channel LT/PP MCA habitat	LP-2	No	\$15,330	\$0
CC 6	Disking if necessary to provide in-channel vegetation control (~100 ac)	LP-2	No	\$27,800	\$0

**Priority Area: Species Habitat**

**Item(s):** *Whooping Crane Grassland / Wet Meadow Habitat*

No.	Management Activities	Budget Line Item	Completed	Cost (Estimated)	Actual Cost
CC 7	No Items	N/A	N/A	N/A	N/A



**Priority Area: Species Habitat**  
**Item(s):** *Other Species of Concern*

No.	Management Activities	Budget Line Item	Completed	Cost (Estimated)	Actual Cost
CC 8	Habitat and species surveys on properties where work will occur	N/A	Yes	N/A	N/A
CC 9	Coordination with USFWS and NGPC to identify and mitigate potential impacts associated with land activities	N/A	Yes	N/A	N/A

**Priority Area: Operations and Maintenance**  
**Item(s):** *Basic Property Maintenance Obligations and Needs*

No.	Management Activities	Budget Line Item	Completed	Cost (Estimated)	Actual Cost
CC 10	Fence and road maintenance	LP-4	No	\$10,000	\$0
CC 11	Noxious weed control	LP-4	No	\$10,000	\$0
CC 12	Mowing	LP-4	No	\$2,000	\$0

**Priority Area: Operations and Maintenance**  
**Item(s):** *Agricultural Operations*

No.	Management Activities	Budget Line Item	Completed	Cost (Estimated)	Actual Cost
CC 13	Grazing lease	N/A	Yes	N/A	N/A

**Property Identification Key:**  
2019001 – PRRIP Bergren Tract  
2020001 – PRRIP Robinson Tract

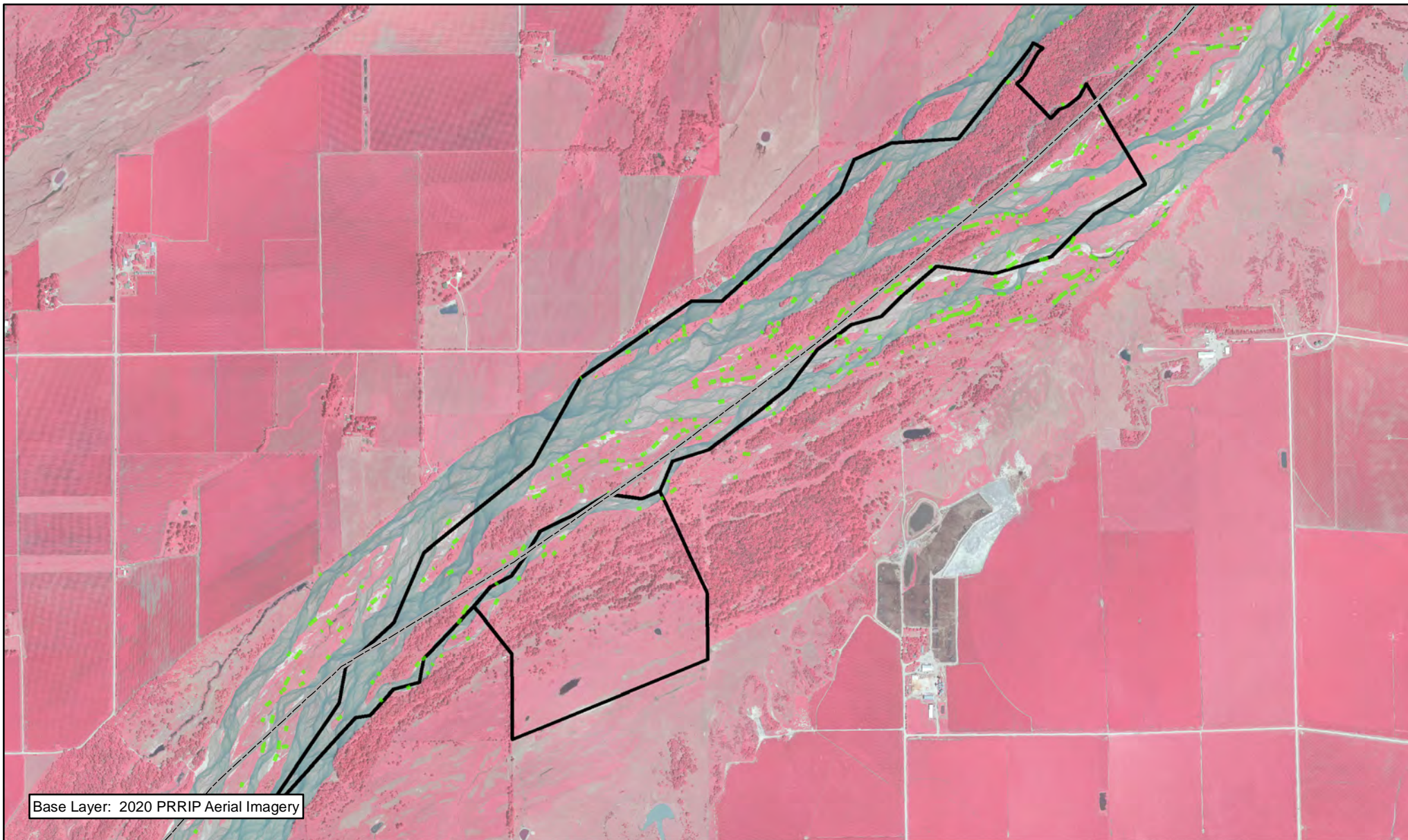
## 2020 Chapman Complex Budget Summary

### 2020 Expenditures by Program Budget Line Item



Priority Area	Item	Budget Line Item	Estimated Expenditure	2020 Expenditure
Species Habitat	Improve Target Species Sand and Water Habitat	LP-2	\$187,800	\$0
Species Habitat	Create In-channel Sand & Water Habitat	LP-2	\$15,330	\$0
Species Habitat	Whooping Crane Wet Meadow/ Grassland Habitat	LP-2	\$0	\$0
<b>Subtotal</b>			<b>\$203,130</b>	<b>\$0</b>
Operations and Maintenance	Property Maintenance and Agricultural Operations	LP-4	\$22,000	\$0
<b>Total</b>			<b>\$225,130</b>	<b>\$0</b>

### 2020 Revenues

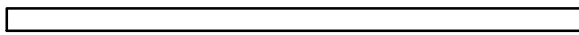
Tract	Item	Estimated Income	2020 Income
Tract 2019001	Meadow Grazing	\$3,000	\$3,640
<b>Total</b>		<b>\$3,000</b>	<b>\$3,640</b>



**Legend**

-  County
-  PVWMA Phrag Control



 Miles

1

**CHAPMAN  
COMPLEX  
FY 2020 ACTIVITIES**

Date: 02/08/2021  
By: TRT

Figure 15

## 2020 Water Properties Annual Work Plan Report

### Platte River Recovery Implementation Program

For More Information Contact: Jason Farnsworth, farnsworthj@headwaterscorp.com (308) 237-5728

### General Priorities

- \* **Good Neighbor Policy** - Conduct all actions in accordance with Program's good neighbor policy.

### Operations and Maintenance Priorities

- \* **Basic Property Maintenance Obligations and Needs** – Fulfill basic property ownership obligations and needs on Tracts W2016001, W2016002, W2017001, & W2017002 including fence and road maintenance, irrigation management and noxious weed control.
- \* **Agricultural Operations** – Oversight of grazing/ haying lease on Tract W2016001 and custom farming on Tract W2016002

### Priority Area: General

**Item(s):** *Complex Land Interest and Complex-Level Planning*

No.	Management Activities	Budget Line Item	Completed	Cost (Estimated)	Actual Cost
WP 1	Coordination of Program land actions with neighboring landowners	N/A	Yes	N/A	N/A

### Priority Area: Operations and Maintenance

**Item(s):** *Basic Property Maintenance Obligations and Needs*

No.	Management Activities	Budget Line Item	Completed	Cost (Estimated)	Actual Cost
WP 2	Fence and road maintenance	WPLW-1		\$7,000	\$0
WP 3	Tract W201701 Boundary Fence	WPLW-1		\$16,500	\$0
WP 4	Noxious weed control	WPLW-1		\$15,000	\$0
WP 5	Mowing	WPLW-1		\$2,000	\$0
WP 6	Tract W2016002 Custom Farm Expense	WPLW-1		\$23,000	\$0
WP 7	Tracts W2016002 & W2017001 Electricity	WPLW-1		\$500	\$519
WP 8	Taxes	WPLW-1		\$9,000	\$9,833



## Priority Area: Operations and Maintenance

**Item(s):** *Agricultural Operations*

No.	Management Activities	Budget Line Item	Completed	Cost (Estimated)	Actual Cost
WP 9	TractW 2016002 Lease Oversight	WPLW-1		N/A	N/A

### Property Identification Key:

W201602 – PRRIP Lindstrum Tract

W201701 – PRRIP Edlund Tract

W201702 - PRRIP Albrecht Tract

W201703 - PRRIP Lakeside Tract

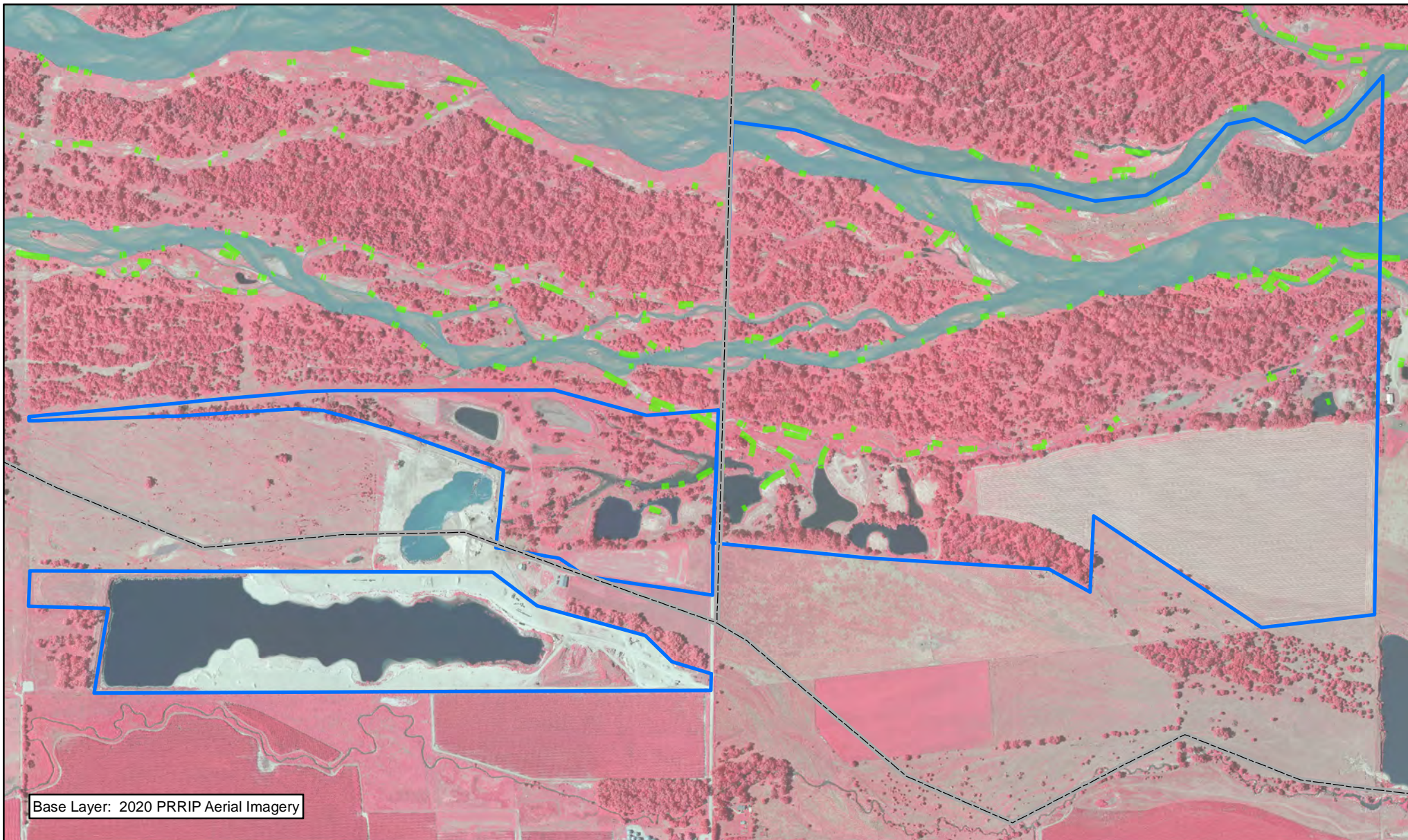
## 2020 Water Properties Budget Summary

### 2020 Expenditures by Program Budget Line Item

Priority Area	Item	Budget Line Item	Estimated Expenditure	2020 Expenditure
Operations and Maintenance	Property Maintenance and Agricultural Operations	WPLW-1	\$73,000	\$10,352
		<b>Total</b>	<b>\$73,000</b>	<b>\$10,352</b>

### 2020 Revenues



Tract	Item	Estimated Income	2020 Income
Tract W201602	Crop Income	\$9,000	\$9,000
Tract W201602	FSA payment for 2019 PLCP Program	\$0	\$853
Tract W201602	USDA for 2019 Market Facilitation	\$0	\$1,098
Tract W201701	N/A	\$0	\$0
Tract W201702	N/A	\$0	\$0
	<b>Total</b>	<b>\$9,000</b>	<b>\$10,951</b>




Base Layer: 2020 PRRIP Aerial Imagery



### Legend

-  County
-  PVWMA Phrag Control



 Miles  
0.5

### WATER TRACTS FY 2020 ACTIVITIES

Date: 02/08/2021  
By: TRT

Figure 17



**PLATTE RIVER**  
RECOVERY IMPLEMENTATION PROGRAM

Page Intentionally Left Blank